

Clear Springs Utility Company 2025 Consumer Confidence Report (CCR)

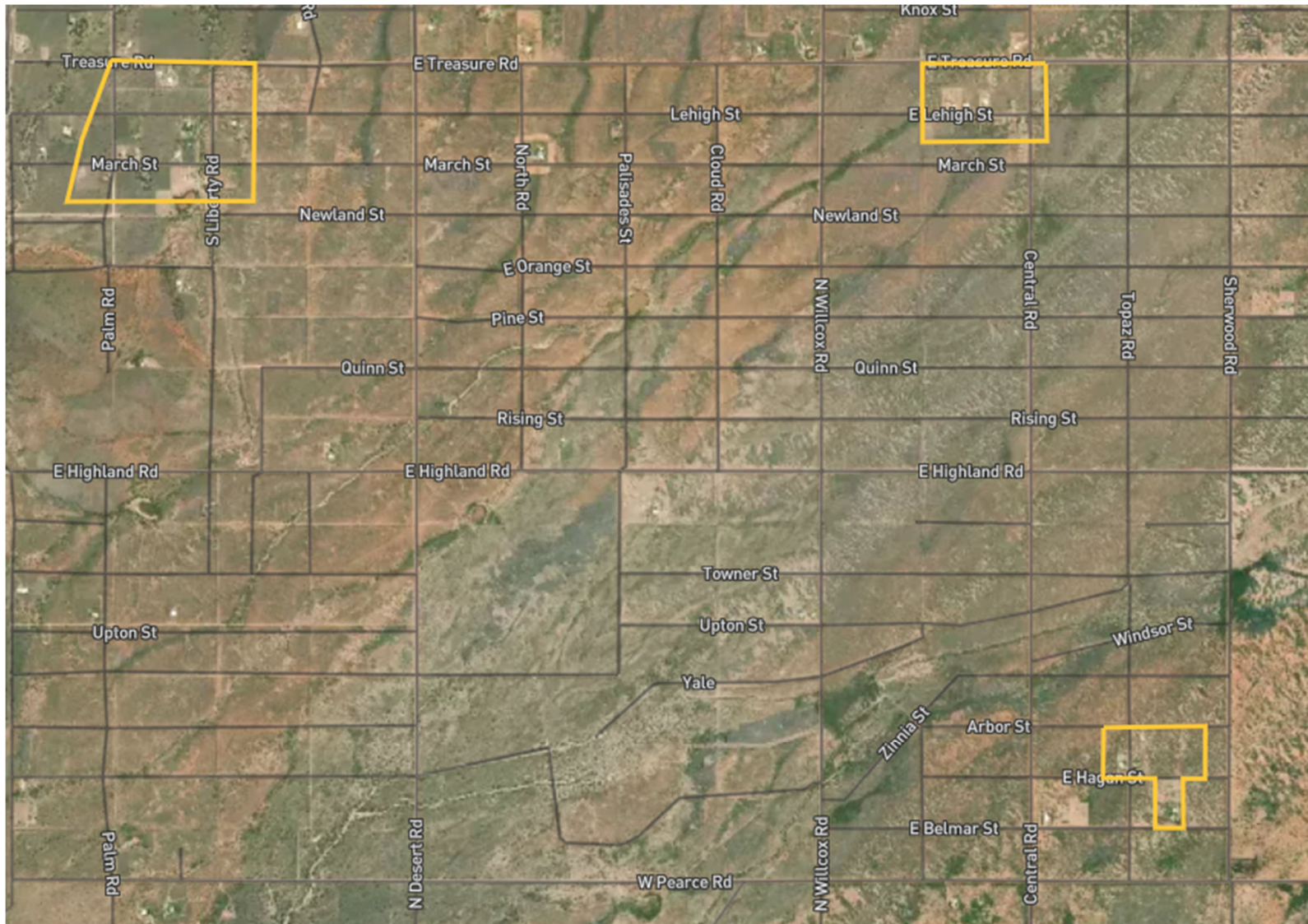
Clear Springs Utility Company is comprised of five public water systems. Two are Community Water Systems (CWS); three are Non-Community Water Systems. The CCR is for the CWS's.

The following maps outline the system boundaries for those five systems.

Please refer to the following CCR for your respective CWS.



These are Non-Community Systems. ADEQ does not require submittal of a CCR.



Consumer Confidence Report for Calendar Year 2025

Este informe contiene información muy importante sobre el agua usted bebe.
Tradúscalo ó hable con alguien que lo entienda bien.

<https://espanol.epa.gov/espanol/recursos-e-informacion-sobre-el-ccr-para-los-consumidores>

Public Water System ID Number	Public Water System Name		
AZ04-02008	Clear Springs Utility Main		
Contact Name and Title	Phone Number	E-mail Address	
Josh Uhland Operations Manager	520-699-4101	juhland@hopewater.com	
We want our valued customers to be informed about their water quality. If you would like to learn more, please visit our website at hopewater.com			

This is our annual report about your drinking water quality, also called a Consumer Confidence Report or CCR. Having clean, safe water is one of the most important services we provide, and we want you to be as informed as possible about your drinking water.

This report provides you with information about where your water comes from, results of sampling that we have performed, and any issues or violations that happened over the previous year. This water quality report includes a table with the most recent water testing results within the last 5 years. The table shows if different germs and chemicals were in a safe range and met EPA's health standards. Look for the column in the table called "TT or MCL violation," to see if your utility found unsafe levels of any germs or chemicals.

You may also find real-time information about our water system at the Arizona Department of Environmental Quality (ADEQ) *Drinking Water Watch* website at https://azsdwis.azdeq.gov/DWW_EXT/

Drinking Water Sources

The sources of drinking water (both tap water and bottled water) include rivers, lakes, streams, ponds, reservoirs, springs, and wells. As water travels over the surface of the land or through the ground, it dissolves naturally-occurring minerals and, in some cases, radioactive material, and can pick up substances resulting from the presence of animals or from human activity.

Our water source(s):	Groundwater two wells, which draws from the Sulphur Springs Valley Aquifer Willcox Basin
-----------------------------	--

Source Water Assessment

Making the water safe to drink starts by protecting the place it comes from. We work with state scientists at the Arizona Department of Environmental Quality (ADEQ) to examine water at its source to look for possible pollutants. This is called a Source Water Assessment (SWA).

Based on the information available at the time of the assessment on the hydrogeology and land uses around the drinking water source(s) of this public water system, the Arizona Department of Environmental Quality (ADEQ) has given a high vulnerability designation for the degree to which this public water system drinking water source(s) are protected.

A designation of high vulnerability indicates there may be additional source water protection measures which can be implemented on the local level. This does not imply that the source water is contaminated nor does it mean that contamination is imminent. Rather, it simply states that land use activities or hydrogeologic conditions exist that make the source water susceptible to possible future contamination. Further source water assessment information can be found on ADEQ's website: <https://azdeq.gov/source-water-protection> or email at sourcewaterprotection@azdeq.gov

Drinking Water Contaminants

Contaminants are any physical, chemical, biological, or radiological substance or matter in water. Contaminants that may be present in source water include:

Microbial Contaminants: such as viruses and bacteria, which may come from sewage treatment plants, septic systems, agricultural livestock operations, and wildlife.

Inorganic Contaminants: such as salts and metals, which can occur naturally in the soil or groundwater or may result from urban stormwater runoff, industrial or domestic wastewater discharges, oil and gas production, mining, or farming.

Pesticides and herbicides: which may come from a variety of sources such as agriculture, urban stormwater runoff, and residential uses.

Organic Chemical Contaminants: including synthetic and volatile organic chemicals, which are by-products of industrial processes and petroleum production, and can also come from gas stations, urban stormwater runoff, and septic systems.

Radioactive Contaminants: which can be naturally-occurring or be the result of oil and gas production and mining activities.

Vulnerable Population

Drinking water, including bottled water, may reasonably be expected to contain at least small amounts of some contaminants. The presence of contaminants does not necessarily indicate that water poses a health risk. In order to ensure that tap water is safe to drink, the Environmental Protection Agency (EPA) prescribes regulations which limit the amount of certain contaminants in water provided by public water systems. The Food and Drug Administration (FDA) regulations establish limits for contaminants in bottled water which must provide the same protection for public health.

Some people may be more vulnerable to contaminants in drinking water than the general population. Immuno-compromised persons such as persons with cancer undergoing chemotherapy, persons who have undergone organ transplants, people with HIV/AIDS or other immune system disorders, some elderly, and infants can be particularly at risk from infections. These people should seek advice about drinking water from their health care providers.

More information about contaminants, their potential health effects, and the appropriate means to lessen the risk can be obtained by calling the Environmental Protection Agency's Safe Drinking Water Hotline at 800-426-4791 or visiting the website epa.gov/safewater.

Definitions

Maximum Contaminant Level (MCL): The highest level of a contaminant that is allowed in drinking water. MCLs are set as close to the MCLGs as feasible using the best available treatment technology.

Maximum Contaminant Level Goal (MCLG): The level of a contaminant in drinking water below which there is no known or expected risk to health. MCLGs allow for a margin of safety.

Treatment Technique (TT): A required process intended to reduce the level of a contaminant in drinking water.

Action Level (AL): The concentration of a contaminant which, if exceeded, triggers treatment or other requirements which a water system must follow.

Maximum residual disinfectant level goal or MRDLG: The level of a drinking water disinfectant below which there is no known or expected risk to health. MRDLGs do not reflect the benefits of the use of disinfectants to control microbial contaminants.

Maximum Residual Disinfectant Level (MRDL): The highest level of a disinfectant allowed in drinking water. There is convincing evidence that addition of a disinfectant is necessary for control of microbial contaminants.

Level 1 Assessment: A study of the water system to identify potential problems and determine (if possible) why total coliform bacteria have been found in our water system.

Level 2 Assessment: A very detailed study of the water system to identify potential problems and determine (if possible) why an *E. coli* MCL violation has occurred and/or why total coliform bacteria have been found in our water system on multiple occasions.

Lead Informational Statement

Lead can cause serious health problems, especially for pregnant women and young children. Lead in drinking water is primarily from materials and components associated with service lines and home plumbing.

Clear Springs Utility Main is responsible for providing high quality drinking water and removing lead pipes, but cannot control the variety of materials used in plumbing components in your home. You share the responsibility for protecting yourself and your family from the lead in your home plumbing. You can take responsibility by identifying and removing lead materials within your home plumbing and taking steps to reduce your family's risk.

Before drinking tap water, flush your pipes for several minutes by running your tap, taking a shower, doing laundry or a load of dishes. You can also use a filter certified by an American National Standards Institute accredited certifier to reduce lead in drinking water.

To address lead in drinking water, public water systems were required to develop and maintain an inventory of service line materials by Oct 16, 2024. Developing an inventory and identifying the location of lead service lines (LSL) is the first step for beginning LSL replacement and protecting public health. Please contact us at hopewater.com if you would like more information about the inventory or any lead sampling that has been done.

Information on lead in drinking water, testing methods, and steps you can take to minimize exposure is available at <http://www.epa.gov/safewater/lead>.

Water Quality Data – Regulated Contaminants

The following are terms related to water quality data presented in this table:

Not Applicable (NA): Sampling was not completed because it was not required by regulation.

Not Detected (ND or <): Not detectable at reporting limit.

Minimum Reporting Limit (MRL): The smallest concentration of a substance that can be reliably measured by a given analytical method.

Millirems per year (MREM): A measure of radiation absorbed by the body.

Nephelometric Turbidity Units (NTU): Measure of water clarity.

Million fibers per liter (MFL): Measure of asbestos fibers.

Picocuries per liter (pCi/L): Measure of the radioactivity in water.

ppm: Parts per million or Milligrams per liter (mg/L), equal to 1/1000 of a gram.

ppb: Parts per billion or Micrograms per liter (µg/L), equal to 1000 ppm.

ppt: Parts per trillion or Nanograms per liter (ng/L), equal to 1000 ppb.

ppq: Parts per quadrillion or Picograms per liter (pg/L), equal to 1000 ppt.

Microbiological (RTCR)	TT Violation Y or N	Number of Positive Samples	Positive Sample(s) Month & Year	MCL	MCLG	Likely Source of Contamination	
E. Coli	N	1	April 2025	0	0	Human and animal fecal waste	
Disinfectants	MCL Violation Y or N	Running Annual Average (RAA)	Range of All Samples (Low-High)	MRDL	MRDLG	Sample Month & Year	Likely Source of Contamination
Chlorine/Chloramine (ppm)	N	0.59	0.53 – 0.59	4	4	2025	Water additive used to control microbes
Lead & Copper	MCL Violation Y or N	90 th Percentile	Number of Samples Exceeding AL	AL	ALG	Sample Month & Year	Likely Source of Contamination
Copper (ppm)	N	0.064	0	1.3	1.3	July 2024	Corrosion of household plumbing systems; erosion of natural deposits
Inorganic Chemicals (IOC)	MCL Violation Y or N	Running Annual Average (RAA) OR Highest Level Detected	Range of All Samples (Low-High)	MCL	MCLG	Sample Month & Year	Likely Source of Contamination
Barium (ppm)	N	0.15	0.13 – 0.15	2	2	Apr 2021	Discharge of drilling wastes; discharge from metal refineries; Erosion of natural deposits
Fluoride (ppm)	N	0.8	0.5 – 0.8	4	4	Apr 2021	Erosion of natural deposits; water additive which promotes strong teeth; discharge from fertilizer and aluminum factories
Nitrate ² (ppm)	N	0.39	0.37 – 0.39	10	10	2025	Runoff from fertilizer use; leaching from septic tanks, sewage; erosion of natural deposits
Sodium (ppm)	N	37	36 - 37	N/A	N/A	Mar 2024	Erosion of natural deposits

All contaminants listed below were tested for and were NOT found in our water. These contaminants are considered Non-Detect or not present:

Synthetic Organic Compounds (Last tested 2024): 2,4-D, 2,4,5-TP (a.k.a. Silvex), Acrylamide, Alachlor, Atrazine, Benzo (a) pyrene (PAH), Carbofuran, Chlordane, Dalapon, Di (2-ethylhexyl) adipate, Di (2-ethylhexyl) phthalate, Dibromochloropropane, Dinoseb, Diquat, Dioxin [a.k.a. 2,3,7,8-TCDD], Endothall, Endrin, Epichlorohydrin, Ethylene dibromide, Glyphosate, Heptachlor, Heptachlor epoxide, Hexachlorobenzene, Hexachlorocyclopentadiene, Lindane, Methoxychlor, Oxamyl (a.k.a. Vydate), PCBs (Polychlorinated biphenyls), Pentachlorophenol, Picloram, Simazine, Toxaphene

Volatile Organic Compounds (Last tested 2024): Benzene, Carbon tetrachloride, Chlorobenzene, o-Dichlorobenzene, p-Dichlorobenzene, 1,2-Dichloroethane, 1,1-Dichloroethylene, cis-1,2 Dichloroethylene, trans-1,2-Dichloroethylene, Dichloromethane, 1,2-Dichloropropane, Ethylbenzene, Styrene, Tetrachloroethylene, 1,2,4-Trichlorobenzene, 1,1,1-Trichloroethane, 1,1,2-Trichloroethane, Trichloroethylene, Toluene, Vinyl Chloride, Xylenes

Inorganic Chemicals (Last tested 2021): Antimony, Arsenic, Asbestos, Beryllium, Cadmium, Chromium, Cyanide, Mercury, Nitrite, Selenium, Thallium

Water Quality Table – Unregulated Contaminants

Your drinking water was sampled in **2024** for the presence and concentration of 29 different per- and polyfluoroalkyl substances, some known by the acronyms PFAS, PFOA, PFNA, PFHxS, PFBS, and GenX, a group of contaminants in the final stages of becoming regulated by the EPA. PFAS are man-made chemicals that are resistant to heat, water, and oil. They have been used since the 1940s to manufacture various consumer products, including fire-fighting foam and stain resistant, water-resistant, and nonstick items. Many PFAS do not break down easily and can build up in people, animals, and the environment over time. Scientific studies have shown that exposure to certain PFAS can be harmful to people and animals, depending on the level and duration of exposure.

To learn more about this group of chemicals, we encourage you to visit the ADEQ website at <https://www.azdeq.gov/pfas-resources>. You may also read the ADEQ-provided “PFAS 101 Fact Sheet” or view ADEQ’s Introduction to PFAS video on YouTube at <https://www.youtube.com/watch?v=t44kSh0uKXE>

No PFAS contaminants were detected in your water.

Violation Summary

Violation Type	Explanation, Health Effects	Time Period	Corrective Actions
MONITOR GWR TRIGGERED/ADDITONAL, MAJOR	<p>We failed to collect follow-up samples within 24 hours of learning of the total coliform-positive sample. These needed to be tested for fecal indicators from all sources that were being used at the time the positive sample was collected.</p> <p>Fecal coliforms and E. coli are bacteria whose presence indicates that the water may be contaminated with human or animal wastes. Microbes in these wastes can cause short-term effects, such as diarrhea, cramps, nausea, headaches, or other symptoms. They may pose a special health risk for infants, young children, and people with severely compromised immune systems.</p>	04/17/2025 - 08/28/2025	We completed our source (well) sampling to get back into compliance.

Please share this information with other people who drink this water, especially those who may not have received this notice directly (for example, people in apartments, nursing homes, schools, and businesses). You can do this by posting this notice in a public place or distributing copies by hand or mail.

Please see Attachment on last page for additional information regarding a Notice of Violation received in 2026.

For more information about these reports and what is required in them, visit EPA’s website at: <https://www.epa.gov/ccr/ccr-information-consumers>

IMPORTANT INFORMATION ABOUT YOUR DRINKING WATER

Clear Springs Utility Main AZ0402008 Failed to Correct a Significant Deficiency Within Required Time Frame.

Our water system recently violated a drinking water requirement. Although this incident was not an emergency, as our customers, you have a right to know what happened and what we have done to correct this situation.

A routine drinking water inspection conducted on November 13, 2025, by the Arizona Department of Environmental Quality found:

Failure to submit and correct an Approval of Construction (AOC) application for the two liquid chlorinator systems.

As required by the conditions of the Notice of Violation, we were required to act to correct the significant deficiency by March 25, 2026. However, we failed to take this action by the deadline established by ADEQ.

What should I do

- There is nothing you need to do. You do not need to boil your water or take other corrective actions. However, if you have specific health concerns, consult your doctor.

What does this mean?

This is not an emergency. If it had been, you would have been notified within 24 hours.

Although unlikely, if you experience any symptoms such as nausea, cramps, diarrhea, and associated headaches, you may want to seek medical advice if they persist. Please note: these symptoms are not only caused by the presence organisms in drinking water, but likely by other factors.

At present time, there is no concern of an exceedance of a regulated contaminant.

What is being done?

The Approval of Construction (AOC) was obtained and submitted to ADEQ on March 26, 2026. This problem was resolved on April 8, 2026.

For more information, please contact Hope Water at 623-219-4740 or skeith@hopewater.com.

This notice is being sent to you by **Clear Springs Utility Main AZ0402008**

Date distributed: April 22, 2026.

**Please share this information with all the other people who drink this water, especially those who may not have received this notice directly (for example, people in apartments, nursing homes, schools, and businesses). You can do this by posting this notice in a public place or distributing copies by hand or mail. **

Consumer Confidence Report for Calendar Year 2025

Este informe contiene información muy importante sobre el agua usted bebe.
Tradúscalo ó hable con alguien que lo entienda bien.

<https://espanol.epa.gov/espanol/recursos-e-informacion-sobre-el-ccr-para-los-consumidores>

Public Water System ID Number	Public Water System Name		
AZ04-02049	Clear Springs Utility Well 6		
Contact Name and Title	Phone Number	E-mail Address	
Josh Uhland	520-699-4101	juhland@hopewater.com	
We want our valued customers to be informed about their water quality. If you would like to learn more, please visit our website at hopewater.com			

This is our annual report about your drinking water quality, also called a Consumer Confidence Report or CCR. Having clean, safe water is one of the most important services we provide, and we want you to be as informed as possible about your drinking water.

This report provides you with information about where your water comes from, results of sampling that we have performed, and any issues or violations that happened over the previous year. This water quality report includes a table with the most recent water testing results within the last 5 years. The table shows if different germs and chemicals were in a safe range and met EPA's health standards. Look for the column in the table called "TT or MCL violation," to see if your utility found unsafe levels of any germs or chemicals.

You may also find real-time information about our water system at the Arizona Department of Environmental Quality (ADEQ) *Drinking Water Watch* website at https://azsdwis.azdeq.gov/DWW_EXT/

Drinking Water Sources

The sources of drinking water (both tap water and bottled water) include rivers, lakes, streams, ponds, reservoirs, springs, and wells. As water travels over the surface of the land or through the ground, it dissolves naturally-occurring minerals and, in some cases, radioactive material, and can pick up substances resulting from the presence of animals or from human activity.

Our water source(s):	Groundwater one well, which draws from the Sulphur Springs Valley Aquifer Wilcox Basin.
-----------------------------	---

Source Water Assessment

Making the water safe to drink starts by protecting the place it comes from. We work with state scientists at the Arizona Department of Environmental Quality (ADEQ) to examine water at its source to look for possible pollutants. This is called a Source Water Assessment (SWA).

Based on the information available at the time of the assessment on the hydrogeology and land uses around the drinking water source(s) of this public water system, the Arizona Department of Environmental Quality (ADEQ) has given a low vulnerability designation for the degree to which this public water system drinking water source(s) are protected.

A low vulnerability designation indicates that most source water protection measures are either already implemented, or the hydrogeology is such that the source water protection measures will have little impact on protection. Further source water assessment information can be found on ADEQ's website: <https://azdeq.gov/source-water-protection>

Drinking Water Contaminants

Contaminants are any physical, chemical, biological, or radiological substance or matter in water. Contaminants that may be present in source water include:

Microbial Contaminants: such as viruses and bacteria, which may come from sewage treatment plants, septic systems, agricultural livestock operations, and wildlife.

Inorganic Contaminants: such as salts and metals, which can occur naturally in the soil or groundwater or may result from urban stormwater runoff, industrial or domestic wastewater discharges, oil and gas production, mining, or farming.

Pesticides and herbicides: which may come from a variety of sources such as agriculture, urban stormwater runoff, and residential uses.

Organic Chemical Contaminants: including synthetic and volatile organic chemicals, which are by-products of industrial processes and petroleum production, and can also come from gas stations, urban stormwater runoff, and septic systems.

Radioactive Contaminants: which can be naturally-occurring or be the result of oil and gas production and mining activities.

Vulnerable Population

Drinking water, including bottled water, may reasonably be expected to contain at least small amounts of some contaminants. The presence of contaminants does not necessarily indicate that water poses a health risk. In order to ensure that tap water is safe to drink, the Environmental Protection Agency (EPA) prescribes regulations which limit the amount of certain contaminants in water provided by public water systems. The Food and Drug Administration (FDA) regulations establish limits for contaminants in bottled water which must provide the same protection for public health.

Some people may be more vulnerable to contaminants in drinking water than the general population. Immuno-compromised persons such as persons with cancer undergoing chemotherapy, persons who have undergone organ transplants, people with HIV/AIDS or other immune system disorders, some elderly, and infants can be particularly at risk from infections. These people should seek advice about drinking water from their health care providers.

More information about contaminants, their potential health effects, and the appropriate means to lessen the risk can be obtained by calling the Environmental Protection Agency's Safe Drinking Water Hotline at 800-426-4791 or visiting the website epa.gov/safewater.

Definitions

Maximum Contaminant Level (MCL): The highest level of a contaminant that is allowed in drinking water. MCLs are set as close to the MCLGs as feasible using the best available treatment technology.

Maximum Contaminant Level Goal (MCLG): The level of a contaminant in drinking water below which there is no known or expected risk to health. MCLGs allow for a margin of safety.

Treatment Technique (TT): A required process intended to reduce the level of a contaminant in drinking water.

Action Level (AL): The concentration of a contaminant which, if exceeded, triggers treatment or other requirements which a water system must follow.

Maximum residual disinfectant level goal or MRDLG: The level of a drinking water disinfectant below which there is no known or expected risk to health. MRDLGs do not reflect the benefits of the use of disinfectants to control microbial contaminants.

Maximum Residual Disinfectant Level (MRDL): The highest level of a disinfectant allowed in drinking water. There is convincing evidence that addition of a disinfectant is necessary for control of microbial contaminants.

Level 1 Assessment: A study of the water system to identify potential problems and determine (if possible) why total coliform bacteria have been found in our water system.

Level 2 Assessment: A very detailed study of the water system to identify potential problems and determine (if possible) why an *E. coli* MCL violation has occurred and/or why total coliform bacteria have been found in our water system on multiple occasions.

Lead Informational Statement

Lead can cause serious health problems, especially for pregnant women and young children. Lead in drinking water is primarily from materials and components associated with service lines and home plumbing.

Clear Springs Utility Well 6 is responsible for providing high quality drinking water and removing lead pipes, but cannot control the variety of materials used in plumbing components in your home. You share the responsibility for protecting yourself and your family from the lead in your home plumbing. You can take responsibility by identifying and removing lead materials within your home plumbing and taking steps to reduce your family's risk.

Before drinking tap water, flush your pipes for several minutes by running your tap, taking a shower, doing laundry or a load of dishes. You can also use a filter certified by an American National Standards Institute accredited certifier to reduce lead in drinking water.

To address lead in drinking water, public water systems were required to develop and maintain an inventory of service line materials by Oct 16, 2024. Developing an inventory and identifying the location of lead service lines (LSL) is the first step for beginning LSL replacement and protecting public health. Please contact us at hopewater.com if you would like more information about the inventory or any lead sampling that has been done.

Information on lead in drinking water, testing methods, and steps you can take to minimize exposure is available at <http://www.epa.gov/safewater/lead>.

Water Quality Data – Regulated Contaminants

The following are terms related to water quality data presented in this table:

Not Applicable (NA): Sampling was not completed because it was not required by regulation.

Not Detected (ND or <): Not detectable at reporting limit.

Minimum Reporting Limit (MRL): The smallest concentration of a substance that can be reliably measured by a given analytical method.

Millirems per year (MREM): A measure of radiation absorbed by the body.

Nephelometric Turbidity Units (NTU): Measure of water clarity.

Million fibers per liter (MFL): Measure of asbestos fibers.

Picocuries per liter (pCi/L): Measure of the radioactivity in water.

ppm: Parts per million or Milligrams per liter (mg/L), equal to 1/1000 of a gram.

ppb: Parts per billion or Micrograms per liter (µg/L), equal to 1000 ppm.

ppt: Parts per trillion or Nanograms per liter (ng/L), equal to 1000 ppb.

ppq: Parts per quadrillion or Picograms per liter (pg/L), equal to 1000 ppt.

Microbiological (RTCR)	TT Violation Y or N	Number of Positive Samples	Positive Sample(s) Month & Year	MCL	MCLG	Likely Source of Contamination	
E. Coli	N	0	N/A	0	0	Human and animal fecal waste	
Disinfectants	MCL Violation Y or N	Running Annual Average (RAA)	Range of All Samples (Low-High)	MRDL	MRDLG	Sample Month & Year	Likely Source of Contamination
Chlorine/Chloramine (ppm)	N	0.64	0.51 – 0.64	4	4	2025	Water additive used to control microbes
Disinfection By-Products	MCL Violation Y or N	Running Annual Average (RAA) OR Highest Level Detected	Range of All Samples (Low-High)	MCL	MCLG	Sample Month & Year	Likely Source of Contamination
Total Trihalomethanes (TTHM) (ppb)	N	1	0 – 0.5	80	N/A	Aug 2025	Byproduct of drinking water disinfection
Lead & Copper	MCL Violation Y or N	90 th Percentile	Number of Samples Exceeding AL	AL	ALG	Sample Month & Year	Likely Source of Contamination
Copper (ppm)	N	0.062	0	1.3	1.3	June 2025	Corrosion of household plumbing systems; erosion of natural deposits
Lead (ppb)	N	9	0	15	0	June 2025	Corrosion of household plumbing systems; erosion of natural deposits
Inorganic Chemicals (IOC)	MCL Violation Y or N	Running Annual Average (RAA) OR Highest Level Detected	Range of All Samples (Low-High)	MCL	MCLG	Sample Month & Year	Likely Source of Contamination
Barium (ppm)	N	0.051	0.051 – 0.051	2	2	Apr 2021	Discharge of drilling wastes; discharge from metal refineries; Erosion of natural deposits
Fluoride (ppm)	N	1.5	1.5 – 1.5	4	4	Apr 2021	Erosion of natural deposits; water additive which promotes strong teeth; discharge from fertilizer and aluminum factories
Nitrate ² (ppm)	N	0.61	0.61 – 0.61	10	10	May 2025	Runoff from fertilizer use; leaching from septic tanks, sewage; erosion of natural deposits
Sodium (ppm)	N	37	37 - 37	N/A	N/A	Mar 2024	Erosion of natural deposits

All contaminants listed below were tested for and were NOT found in our water. These contaminants are considered Non-Detect or not present:

Synthetic Organic Compounds (Last tested 2024): 2,4-D, 2,4,5-TP (a.k.a. Silvex), Acrylamide, Alachlor, Atrazine, Benzo (a) pyrene (PAH), Carbofuran, Chlordane, Dalapon, Di (2-ethylhexyl) adipate, Di (2-ethylhexyl) phthalate, Dibromochloropropane, Dinoseb, Diquat, Dioxin [a.k.a. 2,3,7,8-TCDD], Endothall, Endrin, Epichlorohydrin, Ethylene dibromide, Glyphosate, Heptachlor, Heptachlor epoxide, Hexachlorobenzene, Hexachlorocyclopentadiene, Lindane, Methoxychlor, Oxamyl (a.k.a. Vydate), PCBs (Polychlorinated biphenyls), Pentachlorophenol, Picloram, Simazine, Toxaphene

Volatile Organic Compounds (Last tested 2024): Benzene, Carbon tetrachloride, Chlorobenzene, o-Dichlorobenzene, p-Dichlorobenzene, 1,2-Dichloroethane, 1,1-Dichloroethylene, cis-1,2 Dichloroethylene, trans-1,2-Dichloroethylene, Dichloromethane, 1,2-Dichloropropane, Ethylbenzene, Styrene, Tetrachloroethylene, 1,2,4-Trichlorobenzene, 1,1,1-Trichloroethane, 1,1,2-Trichloroethane, Trichloroethylene, Toluene, Vinyl Chloride, Xylenes

Inorganic Chemicals (Last tested 2021): Antimony, Arsenic, Beryllium, Cadmium, Chromium, Cyanide, Mercury, Nitrite, Selenium, Thallium

Water Quality Table – Unregulated Contaminants

Your drinking water was sampled in **2024** for the presence and concentration of 29 different per- and polyfluoroalkyl substances, some known by the acronyms PFAS, PFOA, PFNA, PFHxS, PFBS, and GenX, a group of contaminants in the final stages of becoming regulated by the EPA. PFAS are man-made chemicals that are resistant to heat, water, and oil. They have been used since the 1940s to manufacture various consumer products, including fire-fighting foam and stain resistant, water-resistant, and nonstick items. Many PFAS do not break down easily and can build up in people, animals, and the environment over time. Scientific studies have shown that exposure to certain PFAS can be harmful to people and animals, depending on the level and duration of exposure.

To learn more about this group of chemicals, we encourage you to visit the ADEQ website at <https://www.azdeq.gov/pfas-resources>. You may also read the ADEQ-provided “PFAS 101 Fact Sheet” or view ADEQ’s Introduction to PFAS video on YouTube at <https://www.youtube.com/watch?v=t44kSh0uKXE>

No PFAS contaminants were detected in your water.

Please see Attachment on last page for additional information regarding a Notice of Violation received in 2026.

For more information about these reports and what is required in them, visit EPA’s website at: <https://www.epa.gov/ccr/ccr-information-consumers>

IMPORTANT INFORMATION ABOUT YOUR DRINKING WATER

Clear Springs Utility Well 6 AZ0402049 Failed to Correct a Significant Deficiency Within Required Time Frame.

Our water system recently violated a drinking water requirement. Although this incident was not an emergency, as our customers, you have a right to know what happened and what we have done to correct this situation.

A routine drinking water inspection conducted on November 13, 2025, by the Arizona Department of Environmental Quality found:

Failure to submit and correct an Approval of Construction (AOC) application for the two liquid chlorinator systems.

As required by the conditions of the Notice of Violation, we were required to act to correct the significant deficiency by March 25, 2026. However, we failed to take this action by the deadline established by ADEQ.

What should I do

- There is nothing you need to do. You do not need to boil your water or take other corrective actions. However, if you have specific health concerns, consult your doctor.

What does this mean?

This is not an emergency. If it had been, you would have been notified within 24 hours.

Although unlikely, if you experience any symptoms such as nausea, cramps, diarrhea, and associated headaches, you may want to seek medical advice if they persist. Please note: these symptoms are not only caused by the presence organisms in drinking water, but likely by other factors.

At present time, there is no concern of an exceedance of a regulated contaminant.

What is being done?

The Approval of Construction (AOC) was obtained and submitted to ADEQ on March 26, 2026. This problem was resolved on April 8, 2026.

For more information, please contact Hope Water at 623-219-4740 or skeith@hopewater.com.

This notice is being sent to you by **Clear Springs Utility Well 6 AZ0402049**

Date distributed: April 22, 2026.

**Please share this information with all the other people who drink this water, especially those who may not have received this notice directly (for example, people in apartments, nursing homes, schools, and businesses). You can do this by posting this notice in a public place or distributing copies by hand or mail. **