

Hope Water Arizona North

2025 Consumer Confidence Reports (CCR)

Hope Water Arizona North is made up of seven Public Water Systems (PWS).

Five are Community Water Systems (CWS) and two are Non-Community Water Systems (NCWS). Arizona Department of Environmental Quality (ADEQ) requires CWS to submit an annual CCR whereas NCWS are not required to submit an annual CCR.

Listed below are the five CWS that require an annual CCR.

- Double R Water Distributors
- Livco Water Company
- Mountain Glen Water Service Linden Trails
- Walnut Creek Water Company
- Yavapai Water Company

Listed below are the two NCWS systems that are not required by ADEQ to submit an annual CCR.

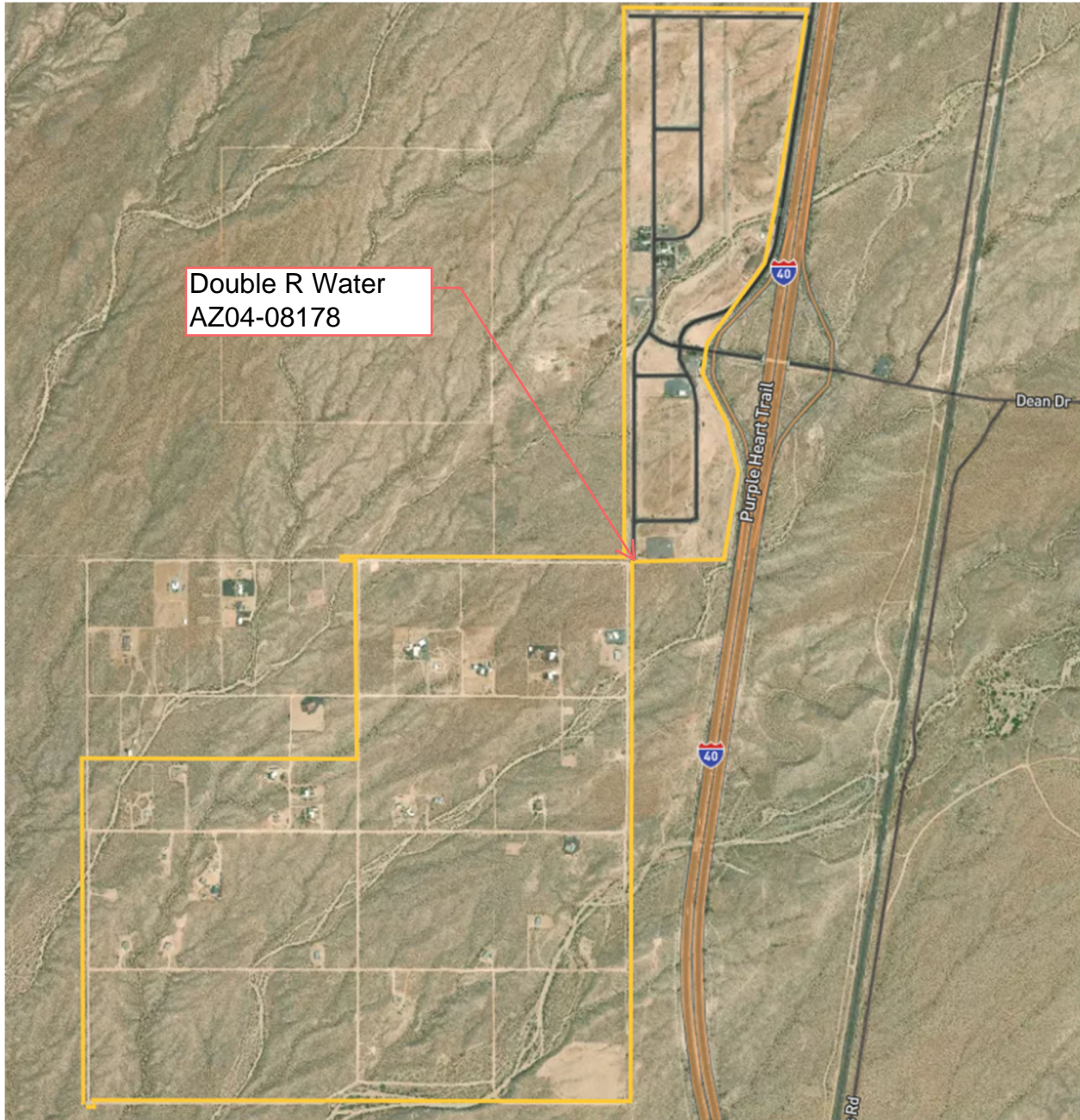
- Mountain Glen Water Service-Falcon
- Mountain Glen Water Service Ricochet Ranch

Along with the CCR's are maps that outline the system boundaries for each PWS. Please refer to your CCR for your respective CWS.

Double R

2025 Consumer Confidence Report (CCR)

The following map outlines the boundaries in yellow for Double R Water Distributors.



Consumer Confidence Report for Calendar Year 2025

Este informe contiene información muy importante sobre el agua usted bebe.
Tradúscalo ó hable con alguien que lo entienda bien.

<https://espanol.epa.gov/espanol/recursos-e-informacion-sobre-el-ccr-para-los-consumidores>

Public Water System ID Number	Public Water System Name		
AZ04-08178	Double R Water Distributors Inc		
Contact Name and Title	Phone Number	E-mail Address	
Jason Gagne	623-219-4740	jgagne@hopewater.com	
We want our valued customers to be informed about their water quality. If you would like to learn more, please visit our website at hopewater.com.			

This is our annual report about your drinking water quality, also called a Consumer Confidence Report or CCR. Having clean, safe water is one of the most important services we provide, and we want you to be as informed as possible about your drinking water.

This report provides you with information about where your water comes from, results of sampling that we have performed, and any issues or violations that happened over the previous year. This water quality report includes a table with the most recent water testing results within the last 5 years. The table shows if different germs and chemicals were in a safe range and met EPA's health standards. Look for the column in the table called "TT or MCL violation," to see if your utility found unsafe levels of any germs or chemicals.

You may also find real-time information about our water system at the Arizona Department of Environmental Quality (ADEQ) *Drinking Water Watch* website at https://azsdwis.azdeq.gov/DWW_EXT/

Drinking Water Sources

The sources of drinking water (both tap water and bottled water) include rivers, lakes, streams, ponds, reservoirs, springs, and wells. As water travels over the surface of the land or through the ground, it dissolves naturally-occurring minerals and, in some cases, radioactive material, and can pick up substances resulting from the presence of animals or from human activity.

Our water source(s):	Groundwater: Two wells located within the Colorado River watershed in the Sacramento Valley Basin. 55-212622 & 55-536616
-----------------------------	--

Source Water Assessment

Making the water safe to drink starts by protecting the place it comes from. We work with state scientists at the Arizona Department of Environmental Quality (ADEQ) to examine water at its source to look for possible pollutants. This is called a Source Water Assessment (SWA).

This water system did not receive a SWA because the system was either inactive at the time or the system did not exist.

Drinking Water Contaminants

Contaminants are any physical, chemical, biological, or radiological substance or matter in water. Contaminants that may be present in source water include:

Microbial Contaminants: such as viruses and bacteria, which may come from sewage treatment plants, septic systems, agricultural livestock operations, and wildlife.

Inorganic Contaminants: such as salts and metals, which can occur naturally in the soil or groundwater or may result from urban stormwater runoff, industrial or domestic wastewater discharges, oil and gas production, mining, or farming.

Pesticides and herbicides: which may come from a variety of sources such as agriculture, urban stormwater runoff, and residential uses.

Organic Chemical Contaminants: including synthetic and volatile organic chemicals, which are by-products of industrial processes and petroleum production, and can also come from gas stations, urban stormwater runoff, and septic systems.

Radioactive Contaminants: which can be naturally-occurring or be the result of oil and gas production and mining activities.

Vulnerable Population

Drinking water, including bottled water, may reasonably be expected to contain at least small amounts of some contaminants. The presence of contaminants does not necessarily indicate that water poses a health risk. In order to ensure that tap water is safe to drink, the Environmental Protection Agency (EPA) prescribes regulations which limit the amount of certain contaminants in water provided by public water systems. The Food and Drug Administration (FDA) regulations establish limits for contaminants in bottled water which must provide the same protection for public health.

Some people may be more vulnerable to contaminants in drinking water than the general population. Immuno-compromised persons such as persons with cancer undergoing chemotherapy, persons who have undergone organ transplants, people with HIV/AIDS or other immune system disorders, some elderly, and infants can be particularly at risk from infections. These people should seek advice about drinking water from their health care providers.

More information about contaminants, their potential health effects, and the appropriate means to lessen the risk can be obtained by calling the Environmental Protection Agency's Safe Drinking Water Hotline at 800-426-4791 or visiting the website epa.gov/safewater.

Definitions

Maximum Contaminant Level (MCL): The highest level of a contaminant that is allowed in drinking water. MCLs are set as close to the MCLGs as feasible using the best available treatment technology.

Maximum Contaminant Level Goal (MCLG): The level of a contaminant in drinking water below which there is no known or expected risk to health. MCLGs allow for a margin of safety.

Treatment Technique (TT): A required process intended to reduce the level of a contaminant in drinking water.

Action Level (AL): The concentration of a contaminant which, if exceeded, triggers treatment or other requirements which a water system must follow.

Maximum residual disinfectant level goal or MRDLG: The level of a drinking water disinfectant below which there is no known or expected risk to health. MRDLGs do not reflect the benefits of the use of disinfectants to control microbial contaminants.

Maximum Residual Disinfectant Level (MRDL): The highest level of a disinfectant allowed in drinking water. There is convincing evidence that addition of a disinfectant is necessary for control of microbial contaminants.

Level 1 Assessment: A study of the water system to identify potential problems and determine (if possible) why total coliform bacteria have been found in our water system.

Level 2 Assessment: A very detailed study of the water system to identify potential problems and determine (if possible) why an *E. coli* MCL violation has occurred and/or why total coliform bacteria have been found in our water system on multiple occasions.

Lead Informational Statement

Lead can cause serious health problems, especially for pregnant women and young children. Lead in drinking water is primarily from materials and components associated with service lines and home plumbing.

Double R Water Distributors Inc is responsible for providing high quality drinking water and removing lead pipes, but cannot control the variety of materials used in plumbing components in your home. You share the responsibility for protecting yourself and your family from the lead in your home plumbing. You can take responsibility by identifying and removing lead materials within your home plumbing and taking steps to reduce your family's risk.

Before drinking tap water, flush your pipes for several minutes by running your tap, taking a shower, doing laundry or a load of dishes. You can also use a filter certified by an American National Standards Institute accredited certifier to reduce lead in drinking water.

To address lead in drinking water, public water systems were required to develop and maintain an inventory of service line materials by Oct 16, 2024. Developing an inventory and identifying the location of lead service lines (LSL) is the first step for beginning LSL replacement and protecting public health. Please contact us at hopewater.com if you wish to have your water tested or would like more information about the inventory or any lead sampling that has been done.

Information on lead in drinking water, testing methods, and steps you can take to minimize exposure is available at <http://www.epa.gov/safewater/lead>.

Water Quality Data – Regulated Contaminants

The following are terms related to water quality data presented in this table:

Not Applicable (NA): Sampling was not completed because it was not required by regulation.

Not Detected (ND or <): Not detectable at reporting limit.

Minimum Reporting Limit (MRL): The smallest concentration of a substance that can be reliably measured by a given analytical method.

Millirems per year (MREM): A measure of radiation absorbed by the body.

Nephelometric Turbidity Units (NTU): Measure of water clarity.

Million fibers per liter (MFL): Measure of asbestos fibers.

Picocuries per liter (pCi/L): Measure of the radioactivity in water.

ppm: Parts per million or Milligrams per liter (mg/L), equal to 1/1000 of a gram.

ppb: Parts per billion or Micrograms per liter (µg/L), equal to 1000 ppm.

ppt: Parts per trillion or Nanograms per liter (ng/L), equal to 1000 ppb.

ppq: Parts per quadrillion or Picograms per liter (pg/L), equal to 1000 ppt.

Microbiological (RTCR)	TT Violation Y or N	Number of Positive Samples	Positive Sample(s) Month & Year	MCL	MCLG	Likely Source of Contamination	
E. Coli	N	0	N/A	0	0	Human and animal fecal waste	
Disinfectants	MCL Violation Y or N	Running Annual Average (RAA)	Range of All Samples (Low-High)	MRDL	MRDLG	Sample Month & Year	Likely Source of Contamination
Chlorine/Chloramine (ppm)	N	0.6	0.6 – 0.6	4	4	Monthly 2025	Water additive used to control microbes
Disinfection By-Products	MCL Violation Y or N	Highest Level Detected	Range of All Samples (Low-High)	MCL	MCLG	Sample Month & Year	Likely Source of Contamination
Haloacetic Acids (HAA5) (ppb)	N	2	2.2 – 2.2	60	N/A	Aug 2025	Byproduct of drinking water disinfection
Total Trihalomethanes (TTHM) (ppb)	N	15	15 - 15	80	N/A	Aug 2025	Byproduct of drinking water disinfection
Lead & Copper	MCL Violation Y or N	90 th Percentile	Number of Samples Exceeding AL	AL	ALG	Sample Month & Year	Likely Source of Contamination
Copper (ppm)	N	0.024	0	1.3	1.3	July 2023	Corrosion of household plumbing systems; erosion of natural deposits
Lead (ppb)	N	0.4	0	15	0	July 2023	Corrosion of household plumbing systems; erosion of natural deposits
Inorganic Chemicals (IOC)	MCL Violation Y or N	Highest Level Detected	Range of All Samples (Low-High)	MCL	MCLG	Sample Month & Year	Likely Source of Contamination
Arsenic ¹ (ppb)	N	5.1	5.1 – 5.1	10	0	May 2023	Erosion of natural deposits, runoff from orchards, runoff from glass and electronics production wastes
Barium (ppm)	N	0.0036	0.0036-0.0036	2	2	May 2023	Discharge of drilling wastes; discharge from metal refineries; Erosion of natural deposits
Chromium (ppb)	N	34	34 - 34	100	100	May 2023	Discharge from steel and pulp mills; Erosion of natural deposits
Fluoride (ppm)	N	1.3	1.3 – 1.3	4	4	May 2023	Erosion of natural deposits; water additive which promotes strong teeth; discharge from fertilizer and aluminum factories
Nitrate ² (ppm)	N	2	2.3 – 2.3	10	10	Apr 2025	Runoff from fertilizer use; leaching from septic tanks, sewage; erosion of natural deposits
Sodium (ppm)	N	42	42 - 42	N/A	N/A	May 2023	Erosion of natural deposits

¹ **Arsenic** is a mineral known to cause cancer in humans at high concentration and is linked to other health effects, such as skin damage and circulatory problems. While your drinking water meets EPA's standard for arsenic, it does contain low levels of arsenic. EPA's standard balances the current understanding of arsenic's possible health effects against the costs of removing arsenic from drinking water. EPA continues to research the health effects of low levels of arsenic, which is a mineral known to cause cancer in humans at high concentrations and is linked to other health effects such as skin damage and circulatory problems.

All contaminants listed below were tested for and were NOT found in our water. These contaminants are considered Non-Detect or not present:

Synthetic Organic Compounds (Last tested 2023): 2,4-D, 2,4,5-TP (a.k.a. Silvex), Acrylamide, Alachlor, Atrazine, Benzo (a) pyrene (PAH), Carbofuran, Chlordane, Dalapon, Di (2-ethylhexyl) adipate, Di (2-ethylhexyl) phthalate, Dibromochloropropane, Dinoseb, Diquat, Dioxin [a.k.a. 2,3,7,8-TCDD], Endothall, Endrin, Epichlorohydrin, Ethylene dibromide, Glyphosate, Heptachlor, Heptachlor epoxide, Hexachlorobenzene, Hexachlorocyclopentadiene, Lindane, Methoxychlor, Oxamyl (a.k.a. Vydate), PCBs (Polychlorinated biphenyls), Pentachlorophenol, Picloram, Simazine, Toxaphene

Volatile Organic Compounds (Last tested 2025): Benzene, Carbon tetrachloride, Chlorobenzene, o-Dichlorobenzene, p-Dichlorobenzene, 1,2-Dichloroethane, 1,1-Dichloroethylene, cis-1,2 Dichloroethylene, trans-1,2-Dichloroethylene, Dichloromethane, 1,2-Dichloropropane, Ethylbenzene, Styrene, Tetrachloroethylene, 1,2,4-Trichlorobenzene, 1,1,1-Trichloroethane, 1,1,2-Trichloroethane, Trichloroethylene, Toluene, Vinyl Chloride, Xylenes

Inorganic Chemicals (Last tested 2023): Antimony, Asbestos, Beryllium, Cadmium, Cyanide, Mercury, Selenium, Thallium

Water Quality Table – Unregulated Contaminants

Your drinking water was sampled in **2024** for the presence and concentration of 29 different per- and polyfluoroalkyl substances, some known by the acronyms PFAS, PFOA, PFNA, PFHxS, PFBS, and GenX, a group of contaminants in the final stages of becoming regulated by the EPA. PFAS are man-made chemicals that are resistant to heat, water, and oil. They have been used since the 1940s to manufacture various consumer products, including fire-fighting foam and stain resistant, water-resistant, and nonstick items. Many PFAS do not break down easily and can build up in people, animals, and the environment over time. Scientific studies have shown that exposure to certain PFAS can be harmful to people and animals, depending on the level and duration of exposure.

To learn more about this group of chemicals, we encourage you to visit the ADEQ website at <https://www.azdeq.gov/pfas-resources>. You may also read the ADEQ-provided "PFAS 101 Fact Sheet" or view ADEQ's Introduction to PFAS video on YouTube at <https://www.youtube.com/watch?v=t44kSh0uKXE>

Water Quality Table – Unregulated Contaminants

Your drinking water was sampled between 6/21/2023-8/21/2024 for the presence and concentration of 29 different per- and polyfluoroalkyl substances, some known by the acronyms PFAS, PFOA, PFNA, PFHxS, PFBS, and GenX, a group of contaminants in the final stages of becoming regulated by the EPA. PFAS are man-made chemicals that are resistant to heat, water, and oil. They have been used since the 1940s to manufacture various consumer products, including fire-fighting foam and stain resistant, water-resistant, and nonstick items. Many PFAS do not break down easily and can build up in people, animals, and the environment over time. Scientific studies have shown that exposure to certain PFAS can be harmful to people and animals, depending on the level and duration of exposure.

To learn more about this group of chemicals, we encourage you to visit the ADEQ website at <https://www.azdeq.gov/pfas-resources>. You may also read the ADEQ-provided "PFAS 101 Fact Sheet" or view ADEQ's Introduction to PFAS video on YouTube at <https://www.youtube.com/watch?v=t44kSh0uKXE>

Per- and Polyfluoroalkyl Substances	Highest Level Detected	Range of All Samples	Proposed MCL
PFOA (in parts per trillion)	ND	ND	4.0 ppt
PFOS (in parts per trillion)	ND	ND	4.0 ppt
PFNA (in parts per trillion)	ND	ND	10 ppt
PFHxS (in parts per trillion)	ND	ND	10 ppt
PFBS (in parts per trillion)	ND	ND	N/A*
GenX (in parts per trillion)	ND	ND	10 ppt
Calculated Hazard Index (HI)	ND		1 (no units)

* **Hazard Index or HI:** The Hazard Index is an approach that determines the health concerns associated with mixtures of certain PFAS in finished drinking water. Low levels of multiple PFAS that individually would not likely result in adverse health effects may pose health concerns when combined in a mixture. The Hazard Index MCL represents the maximum level for mixtures of PFHxS, PFNA, HFPO-DA, and/or PFBS allowed in water delivered by a public water system. A Hazard Index greater than 1 requires a system to take action.

For more information about these reports and what is required in them, visit EPA's website at:
<https://www.epa.gov/ccr/ccr-information-consumers>

Livco Water Company

2025 Consumer Confidence Report (CCR)

The following map outlines the boundaries in yellow for Livco Water Company.



Consumer Confidence Report for Calendar Year 2025

Este informe contiene información muy importante sobre el agua usted bebe.
Tradúscalo ó hable con alguien que lo entienda bien.

<https://espanol.epa.gov/espanol/recursos-e-informacion-sobre-el-ccr-para-los-consumidores>

Public Water System ID Number	Public Water System Name		
AZ04-01018	Livco Water Company		
Contact Name and Title	Phone Number	E-mail Address	
Jason Gagne, Compliance Manager	623-219-4740	jgagne@hopewater.com	
We want our valued customers to be informed about their water quality. If you would like to learn more, please visit our website at hopewater.com.			

This is our annual report about your drinking water quality, also called a Consumer Confidence Report or CCR. Having clean, safe water is one of the most important services we provide, and we want you to be as informed as possible about your drinking water.

This report provides you with information about where your water comes from, results of sampling that we have performed, and any issues or violations that happened over the previous year. This water quality report includes a table with the most recent water testing results within the last 5 years. The table shows if different germs and chemicals were in a safe range and met EPA's health standards. Look for the column in the table called "TT or MCL violation," to see if your utility found unsafe levels of any germs or chemicals.

You may also find real-time information about our water system at the Arizona Department of Environmental Quality (ADEQ) *Drinking Water Watch* website at https://azsdwis.azdeq.gov/DWW_EXT/

Drinking Water Sources

The sources of drinking water (both tap water and bottled water) include rivers, lakes, streams, ponds, reservoirs, springs, and wells. As water travels over the surface of the land or through the ground, it dissolves naturally-occurring minerals and, in some cases, radioactive material, and can pick up substances resulting from the presence of animals or from human activity.

Our water source(s):	Groundwater from two active wells.
-----------------------------	------------------------------------

Source Water Assessment

Making the water safe to drink starts by protecting the place it comes from. We work with state scientists at the Arizona Department of Environmental Quality (ADEQ) to examine water at its source to look for possible pollutants. This is called a Source Water Assessment (SWA).

Based on the information available at the time of the assessment on the hydrogeology and land uses around the drinking water source(s) of this public water system, the Arizona Department of Environmental Quality (ADEQ) has given a low vulnerability designation for the degree to which this public water system drinking water source(s) are protected.

A low vulnerability designation indicates that most source water protection measures are either already implemented, or the hydrogeology is such that the source water protection measures will have little impact on protection. Further source water assessment information can be found on ADEQ's website: <https://azdeq.gov/source-water-protection>

Drinking Water Contaminants

Contaminants are any physical, chemical, biological, or radiological substance or matter in water. Contaminants that may be present in source water include:

Microbial Contaminants: such as viruses and bacteria, which may come from sewage treatment plants, septic systems, agricultural livestock operations, and wildlife.

Inorganic Contaminants: such as salts and metals, which can occur naturally in the soil or groundwater or may result from urban stormwater runoff, industrial or domestic wastewater discharges, oil and gas production, mining, or farming.

Pesticides and herbicides: which may come from a variety of sources such as agriculture, urban stormwater runoff, and residential uses.

Organic Chemical Contaminants: including synthetic and volatile organic chemicals, which are by-products of industrial processes and petroleum production, and can also come from gas stations, urban stormwater runoff, and septic systems.

Radioactive Contaminants: which can be naturally-occurring or be the result of oil and gas production and mining activities.

Vulnerable Population

Drinking water, including bottled water, may reasonably be expected to contain at least small amounts of some contaminants. The presence of contaminants does not necessarily indicate that water poses a health risk. In order to ensure that tap water is safe to drink, the Environmental Protection Agency (EPA) prescribes regulations which limit the amount of certain contaminants in water provided by public water systems. The Food and Drug Administration (FDA) regulations establish limits for contaminants in bottled water which must provide the same protection for public health.

Some people may be more vulnerable to contaminants in drinking water than the general population. Immuno-compromised persons such as persons with cancer undergoing chemotherapy, persons who have undergone organ transplants, people with HIV/AIDS or other immune system disorders, some elderly, and infants can be particularly at risk from infections. These people should seek advice about drinking water from their health care providers.

More information about contaminants, their potential health effects, and the appropriate means to lessen the risk can be obtained by calling the Environmental Protection Agency's Safe Drinking Water Hotline at 800-426-4791 or visiting the website epa.gov/safewater.

Definitions

Maximum Contaminant Level (MCL): The highest level of a contaminant that is allowed in drinking water. MCLs are set as close to the MCLGs as feasible using the best available treatment technology.

Maximum Contaminant Level Goal (MCLG): The level of a contaminant in drinking water below which there is no known or expected risk to health. MCLGs allow for a margin of safety.

Treatment Technique (TT): A required process intended to reduce the level of a contaminant in drinking water.

Action Level (AL): The concentration of a contaminant which, if exceeded, triggers treatment or other requirements which a water system must follow.

Maximum residual disinfectant level goal or MRDLG: The level of a drinking water disinfectant below which there is no known or expected risk to health. MRDLGs do not reflect the benefits of the use of disinfectants to control microbial contaminants.

Maximum Residual Disinfectant Level (MRDL): The highest level of a disinfectant allowed in drinking water. There is convincing evidence that addition of a disinfectant is necessary for control of microbial contaminants.

Level 1 Assessment: A study of the water system to identify potential problems and determine (if possible) why total coliform bacteria have been found in our water system.

Level 2 Assessment: A very detailed study of the water system to identify potential problems and determine (if possible) why an *E. coli* MCL violation has occurred and/or why total coliform bacteria have been found in our water system on multiple occasions.

Lead Informational Statement

Lead can cause serious health problems, especially for pregnant women and young children. Lead in drinking water is primarily from materials and components associated with service lines and home plumbing.

Livco Water Company is responsible for providing high quality drinking water and removing lead pipes, but cannot control the variety of materials used in plumbing components in your home. You share the responsibility for protecting yourself and your family from the lead in your home plumbing. You can take responsibility by identifying and removing lead materials within your home plumbing and taking steps to reduce your family's risk.

Before drinking tap water, flush your pipes for several minutes by running your tap, taking a shower, doing laundry or a load of dishes. You can also use a filter certified by an American National Standards Institute accredited certifier to reduce lead in drinking water.

To address lead in drinking water, public water systems were required to develop and maintain an inventory of service line materials by Oct 16, 2024. Developing an inventory and identifying the location of lead service lines (LSL) is the first step for beginning LSL replacement and protecting public health. Please contact us if you would like more information about the inventory or any lead sampling that has been done.

If you are concerned about lead in your drinking water. Information on lead in drinking water, testing methods, and steps you can take to minimize exposure is available at <http://www.epa.gov/safewater/lead>.

Water Quality Data – Regulated Contaminants

The following are terms related to water quality data presented in this table:

Not Applicable (NA): Sampling was not completed because it was not required by regulation.

Not Detected (ND or <): Not detectable at reporting limit.

Minimum Reporting Limit (MRL): The smallest concentration of a substance that can be reliably measured by a given analytical method.

Millirems per year (MREM): A measure of radiation absorbed by the body.

Nephelometric Turbidity Units (NTU): Measure of water clarity.

Million fibers per liter (MFL): Measure of asbestos fibers.

Picocuries per liter (pCi/L): Measure of the radioactivity in water.

ppm: Parts per million or Milligrams per liter (mg/L), equal to 1/1000 of a gram.

ppb: Parts per billion or Micrograms per liter (µg/L), equal to 1000 ppm.

ppt: Parts per trillion or Nanograms per liter (ng/L), equal to 1000 ppb.

ppq: Parts per quadrillion or Picograms per liter (pg/L), equal to 1000 ppt.

Microbiological (RTCR)	TT Violation Y or N	Number of Positive Samples	Positive Sample(s) Month & Year	MCL	MCLG	Likely Source of Contamination	
E. Coli	N	0	N/A	0	0	Human and animal fecal waste	
Disinfectants	MCL Violation Y or N	Running Annual Average (RAA)	Range of All Samples (Low-High)	MRDL	MRDLG	Sample Month & Year	Likely Source of Contamination
Chlorine/Chloramine (ppm)	N	0.7	0.49 – 0.7	4	4	2025	Water additive used to control microbes
Disinfection By-Products	MCL Violation Y or N	Running Annual Average (RAA) OR Highest Level Detected	Range of All Samples (Low-High)	MCL	MCLG	Sample Month & Year	Likely Source of Contamination
Total Trihalomethanes (TTHM) (ppb)	N	2	0.88 – 3.9	80	N/A	Aug 2025	Byproduct of drinking water disinfection
Lead & Copper	MCL Violation Y or N	90 th Percentile	Number of Samples Exceeding AL	AL	ALG	Sample Month & Year	Likely Source of Contamination
Copper (ppm)	N	0.037	0	1.3	1.3	Aug 2023	Corrosion of household plumbing systems; erosion of natural deposits
Lead (ppb)	N	6	0	15	0	Aug 2023	Corrosion of household plumbing systems; erosion of natural deposits
Radionuclides	MCL Violation Y or N	Running Annual Average (RAA) OR Highest Level Detected	Range of All Samples (Low-High)	MCL	MCLG	Sample Month & Year	Likely Source of Contamination
Gross Alpha excluding Radon and Uranium	N	1.76	ND – 1.76	15	0	May 2024	Erosion of natural deposits
Combined Radium-226 & -228 (pCi/L)	N	3	ND – 3	5	0	May 2024	Erosion of natural deposits
Inorganic Chemicals (IOC)	MCL Violation Y or N	Running Annual Average (RAA) OR Highest Level Detected	Range of All Samples (Low-High)	MCL	MCLG	Sample Month & Year	Likely Source of Contamination
Antimony (ppb)	N	3.3	ND – 3.3	6	6	May 2024	Discharge from petroleum refineries; fire retardants; ceramics, electronics and solder
Arsenic ¹ (ppb)	N	4.5	ND – 4.5	10	0	May 2024	Erosion of natural deposits, runoff from orchards, runoff from glass and electronics production wastes
Barium (ppm)	N	0.062	0.012 – 0.062	2	2	May 2024	Discharge of drilling wastes; discharge from metal refineries; Erosion of natural deposits
Chromium (ppb)	N	1.5	ND – 1.5	100	100	May 2024	Discharge from steel and pulp mills; Erosion of natural deposits
Fluoride (ppm)	N	0.36	0.069 – 0.36	4	4	May 2024	Erosion of natural deposits; water additive which promotes strong teeth; discharge from fertilizer and aluminum factories
Nitrate ² (ppm)	N	0.36	ND – 0.36	10	10	May 2024	Runoff from fertilizer use; leaching from septic tanks, sewage; erosion of natural deposits
Sodium (ppm)	N	19	7.7 - 19	N/A	N/A	May 2024	Erosion of natural deposits

All contaminants listed below were tested for and were NOT found in our water. These contaminants are considered Non-Detect or not present:

Synthetic Organic Compounds (Last tested 2024): 2,4-D, 2,4,5-TP (a.k.a. Silvex), Acrylamide, Alachlor, Atrazine, Benzo (a) pyrene (PAH), Carbofuran, Chlordane, Dalapon, Di (2-ethylhexyl) adipate, Di (2-ethylhexyl) phthalate, Dibromochloropropane, Dinoseb, Diquat, Dioxin [a.k.a. 2,3,7,8-TCDD], Endothall, Endrin, Epichlorohydrin, Ethylene dibromide, Glyphosate, Heptachlor, Heptachlor epoxide, Hexachlorobenzene, Hexachlorocyclo pentadiene, Lindane, Methoxychlor, Oxamyl (a.k.a. Vydate), PCBs (Polychlorinated biphenyls), Pentachlorophenol, Picloram, Simazine, Toxaphene

Volatile Organic Compounds (Last tested 2024): Benzene, Carbon tetrachloride, Chlorobenzene, o-Dichlorobenzene, p-Dichlorobenzene, 1,2-Dichloroethane, 1,1-Dichloroethylene, cis-1,2 Dichloroethylene, trans-1,2-Dichloroethylene, Dichloromethane, 1,2-Dichloropropane, Ethylbenzene, Styrene, Tetrachloroethylene, 1,2,4-Trichlorobenzene, 1,1,1-Trichloroethane, 1,1,2-Trichloroethane, Trichloroethylene, Toluene, Vinyl Chloride, Xylenes

Inorganic Chemicals (Last tested 2024): Asbestos, Beryllium, Cadmium, Cyanide, Mercury, Selenium, Thallium Nitrite (last tested 2021).

Water Quality Table – Unregulated Contaminants

Your drinking water was sampled in **2024** for the presence and concentration of 29 different per- and polyfluoroalkyl substances, some known by the acronyms PFAS, PFOA, PFNA, PFHxS, PFBS, and GenX, a group of contaminants in the final stages of becoming regulated by the EPA. PFAS are man-made chemicals that are resistant to heat, water, and oil. They have been used since the 1940s to manufacture various consumer products, including fire-fighting foam and stain resistant, water-resistant, and nonstick items. Many PFAS do not break down easily and can build up in people, animals, and the environment over time. Scientific studies have shown that exposure to certain PFAS can be harmful to people and animals, depending on the level and duration of exposure.

To learn more about this group of chemicals, we encourage you to visit the ADEQ website at <https://www.azdeq.gov/pfas-resources>. You may also read the ADEQ-provided “PFAS 101 Fact Sheet” or view ADEQ’s Introduction to PFAS video on YouTube at <https://www.youtube.com/watch?v=t44kSh0uKXE>

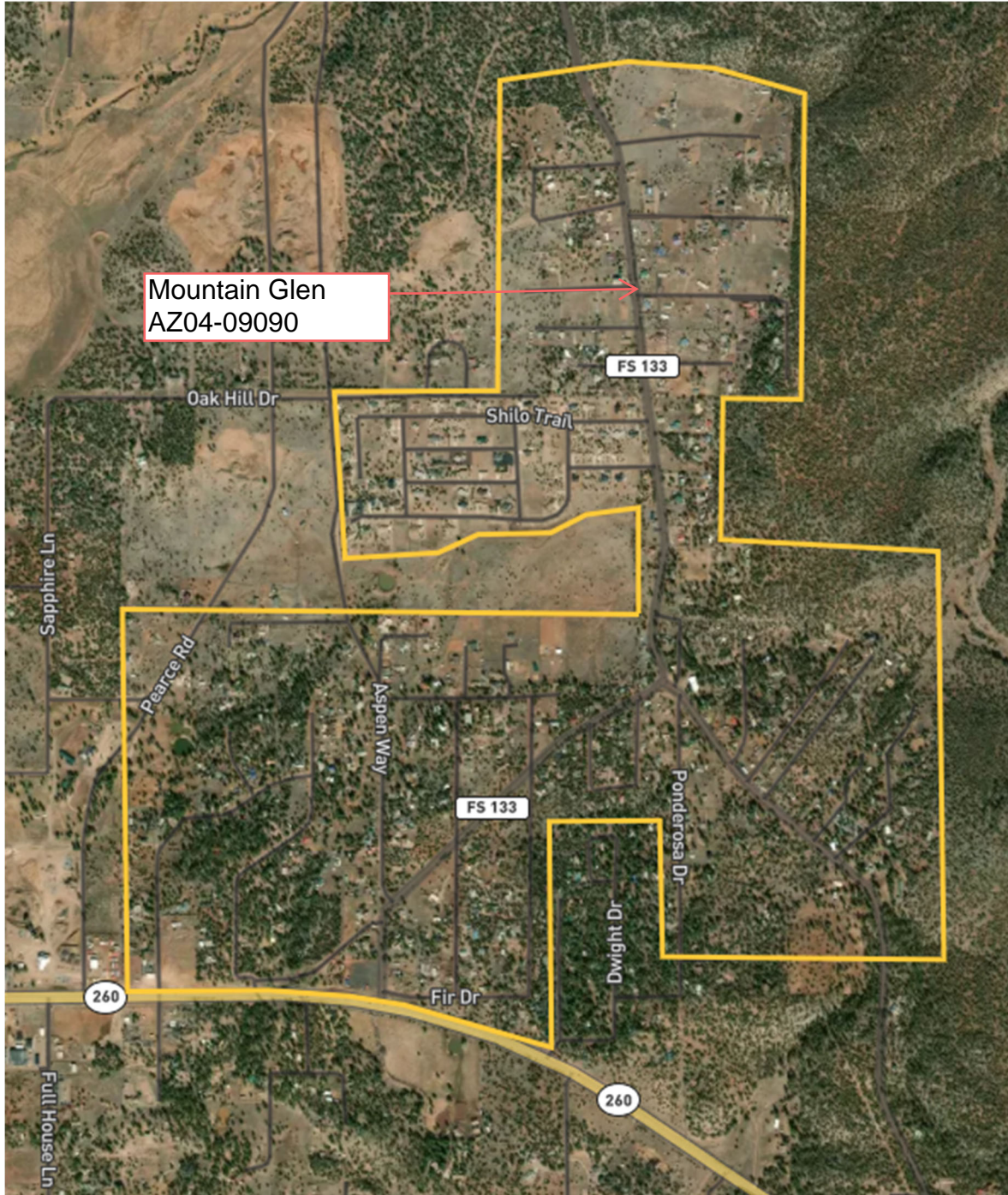
No PFAS contaminants were detected in your water.

For more information about these reports and what is required in them, visit EPA’s website at: <https://www.epa.gov/ccr/ccr-information-consumers>

Mountain Glen

2025 Consumer Confidence Report (CCR)

The following map outlines the boundaries in yellow for Mountain Glen Water Service Linden Trails.



The following map outlines the boundaries in yellow for the two (NCWS) Mountain Glen Water Service-Falcon and Ricochet Ranch.



Consumer Confidence Report for Calendar Year 2025

Este informe contiene información muy importante sobre el agua que usted bebe.
Tradúscalo o hable con alguien que lo entienda bien.

<https://espanol.epa.gov/espanol/recursos-e-informacion-sobre-el-ccr-para-los-consumidores>

Public Water System ID Number	Public Water System Name		
AZ04-09090	Mountain Glen Water Service Linden Trails		
Contact Name and Title	Phone Number	E-mail Address	
Jason Gagne, Compliance Manager	623-219-4740	jgagne@hopewater.com	
We want our valued customers to be informed about their water quality. If you would like to learn more, please visit our website at hopewater.com.			

This is our annual report about your drinking water quality, also called a Consumer Confidence Report or CCR. Having clean, safe water is one of the most important services we provide, and we want you to be as informed as possible about your drinking water.

This report provides you with information about where your water comes from, results of sampling that we have performed, and any issues or violations that happened over the previous year. This water quality report includes a table with the most recent water testing results within the last 5 years. The table shows if different germs and chemicals were in a safe range and met EPA's health standards. Look for the column in the table called "TT or MCL violation," to see if your utility found unsafe levels of any germs or chemicals.

You may also find real-time information about our water system at the Arizona Department of Environmental Quality (ADEQ) *Drinking Water Watch* website at https://azsdwis.azdeq.gov/DWW_EXT/

Drinking Water Sources

The sources of drinking water (both tap water and bottled water) include rivers, lakes, streams, ponds, reservoirs, springs, and wells. As water travels over the surface of the land or through the ground, it dissolves naturally-occurring minerals and, in some cases, radioactive material, and can pick up substances resulting from the presence of animals or from human activity.

Our water source(s):	Two wells that pump groundwater from the Little Colorado River Plateau Basin.
-----------------------------	---

Source Water Assessment

Making the water safe to drink starts by protecting the place it comes from. We work with state scientists at the Arizona Department of Environmental Quality (ADEQ) to examine water at its source to look for possible pollutants. This is called a Source Water Assessment (SWA).

This water system did not receive a SWA because the system was either inactive at the time or the system did not exist.

Drinking Water Contaminants

Contaminants are any physical, chemical, biological, or radiological substance or matter in water. Contaminants that may be present in source water include:

Microbial Contaminants: such as viruses and bacteria, which may come from sewage treatment plants, septic systems, agricultural livestock operations, and wildlife.

Inorganic Contaminants: such as salts and metals, which can occur naturally in the soil or groundwater or may result from urban stormwater runoff, industrial or domestic wastewater discharges, oil and gas production, mining, or farming.

Pesticides and herbicides: which may come from a variety of sources such as agriculture, urban stormwater runoff, and residential uses.

Organic Chemical Contaminants: including synthetic and volatile organic chemicals, which are by-products of industrial processes and petroleum production, and can also come from gas stations, urban stormwater runoff, and septic systems.

Radioactive Contaminants: which can be naturally-occurring or be the result of oil and gas production and mining activities.

Vulnerable Population

Drinking water, including bottled water, may reasonably be expected to contain at least small amounts of some contaminants. The presence of contaminants does not necessarily indicate that water poses a health risk. In order to ensure that tap water is safe to drink, the Environmental Protection Agency (EPA) prescribes regulations which limit the amount of certain contaminants in water provided by public water systems. The Food and Drug Administration (FDA) regulations establish limits for contaminants in bottled water which must provide the same protection for public health.

Some people may be more vulnerable to contaminants in drinking water than the general population. Immuno-compromised persons such as persons with cancer undergoing chemotherapy, persons who have undergone organ transplants, people with HIV/AIDS or other immune system disorders, some elderly, and infants can be particularly at risk from infections. These people should seek advice about drinking water from their health care providers.

More information about contaminants, their potential health effects, and the appropriate means to lessen the risk can be obtained by calling the Environmental Protection Agency's Safe Drinking Water Hotline at 800-426-4791 or visiting the website epa.gov/safewater.

Definitions

Maximum Contaminant Level (MCL): The highest level of a contaminant that is allowed in drinking water. MCLs are set as close to the MCLGs as feasible using the best available treatment technology.

Maximum Contaminant Level Goal (MCLG): The level of a contaminant in drinking water below which there is no known or expected risk to health. MCLGs allow for a margin of safety.

Treatment Technique (TT): A required process intended to reduce the level of a contaminant in drinking water.

Action Level (AL): The concentration of a contaminant which, if exceeded, triggers treatment or other requirements which a water system must follow.

Maximum residual disinfectant level goal or MRDLG: The level of a drinking water disinfectant below which there is no known or expected risk to health. MRDLGs do not reflect the benefits of the use of disinfectants to control microbial contaminants.

Maximum Residual Disinfectant Level (MRDL): The highest level of a disinfectant allowed in drinking water. There is convincing evidence that addition of a disinfectant is necessary for control of microbial contaminants.

Level 1 Assessment: A study of the water system to identify potential problems and determine (if possible) why total coliform bacteria have been found in our water system.

Level 2 Assessment: A very detailed study of the water system to identify potential problems and determine (if possible) why an *E. coli* MCL violation has occurred and/or why total coliform bacteria have been found in our water system on multiple occasions.

Lead Informational Statement

Lead can cause serious health problems, especially for pregnant women and young children. Lead in drinking water is primarily from materials and components associated with service lines and home plumbing.

Mountain Glen Water Service is responsible for providing high quality drinking water and removing lead pipes, but cannot control the variety of materials used in plumbing components in your home. You share the responsibility for protecting yourself and your family from the lead in your home plumbing. You can take responsibility by identifying and removing lead materials within your home plumbing and taking steps to reduce your family's risk.

Before drinking tap water, flush your pipes for several minutes by running your tap, taking a shower, doing laundry or a load of dishes. You can also use a filter certified by an American National Standards Institute accredited certifier to reduce lead in drinking water.

To address lead in drinking water, public water systems were required to develop and maintain an inventory of service line materials by Oct 16, 2024. Developing an inventory and identifying the location of lead service lines (LSL) is the first step for beginning LSL replacement and protecting public health. Please contact us at hopewater.com if you would like more information about the inventory or any lead sampling that has been done.

Information on lead in drinking water, testing methods, and steps you can take to minimize exposure is available at <http://www.epa.gov/safewater/lead>.

Water Quality Data – Regulated Contaminants

The following are terms related to water quality data presented in this table:

Not Applicable (NA): Sampling was not completed because it was not required by regulation.

Not Detected (ND or <): Not detectable at reporting limit.

Minimum Reporting Limit (MRL): The smallest concentration of a substance that can be reliably measured by a given analytical method.

Millirems per year (MREM): A measure of radiation absorbed by the body.

Nephelometric Turbidity Units (NTU): Measure of water clarity.

Million fibers per liter (MFL): Measure of asbestos fibers.

Picocuries per liter (pCi/L): Measure of the radioactivity in water.

ppm: Parts per million or Milligrams per liter (mg/L), equal to 1/1000 of a gram.

ppb: Parts per billion or Micrograms per liter (µg/L), equal to 1000 ppm.

ppt: Parts per trillion or Nanograms per liter (ng/L), equal to 1000 ppb.

ppq: Parts per quadrillion or Picograms per liter (pg/L), equal to 1000 ppt.

Microbiological (RTCR)	TT Violation Y or N	Number of Positive Samples	Positive Sample(s) Month & Year	MCL	MCLG	Likely Source of Contamination	
E. Coli	N	0	N/A	0	0	Human and animal fecal waste	
Disinfectants	MCL Violation Y or N	Running Annual Average (RAA)	Range of All Samples (Low-High)	MRDL	MRDLG	Sample Month & Year	Likely Source of Contamination
Chlorine/Chloramine (ppm)	N	0.3	0.3 – 0.3	4	4	2025	Water additive used to control microbes
Lead & Copper	MCL Violation Y or N	90 th Percentile	Number of Samples Exceeding AL	AL	ALG	Sample Month & Year	Likely Source of Contamination
Copper (ppm)	N	0.16	0	1.3	1.3	Aug 2025	Corrosion of household plumbing systems; erosion of natural deposits
Radionuclides	MCL Violation Y or N	Running Annual Average (RAA) OR Highest Level Detected	Range of All Samples (Low-High)	MCL	MCLG	Sample Month & Year	Likely Source of Contamination
Alpha Emitters (pCi/L)	N	2.7	2.7 – 2.7	15	0	2025	Erosion of natural deposits
Combined Radium-226 & -228 (pCi/L)	N	1.57	1.57 – 1.57	5	0	Aug 2023	Erosion of natural deposits
Inorganic Chemicals (IOC)	MCL Violation Y or N	Running Annual Average (RAA) OR Highest Level Detected	Range of All Samples (Low-High)	MCL	MCLG	Sample Month & Year	Likely Source of Contamination
Arsenic ¹ (ppb)	N	8	8 - 8	10	0	July 2025	Erosion of natural deposits, runoff from orchards, runoff from glass and electronics production wastes
Barium (ppm)	N	0.14	0.12 – 0.14	2	2	July 2025	Discharge of drilling wastes; discharge from metal refineries; Erosion of natural deposits
Chromium (ppb)	N	3.6	3.3 – 3.6	100	100	July 2025	Discharge from steel and pulp mills; Erosion of natural deposits
Fluoride (ppm)	N	0.16	0.12 – 0.16	4	4	July 2025	Erosion of natural deposits; water additive which promotes strong teeth; discharge from fertilizer and aluminum factories
Nickel	N	2.3	2.1 – 2.3	0	0	July 2025	Erosion of natural deposits; Discharge from refineries, factories, and mines.
Nitrate ² (ppm)	N	0.48	0.36 – 0.48	10	10	2025	Runoff from fertilizer use; leaching from septic tanks, sewage; erosion of natural deposits
Selenium (ppb)	N	14	12 - 14	50	50	July 2025	Discharge from petroleum and metal refineries; erosion of natural deposits; discharge from mines

Sodium (ppm)	N	5.1	4.5 – 5.1	N/A	N/A	July 2025	Erosion of natural deposits
¹ Arsenic is a mineral known to cause cancer in humans at high concentration and is linked to other health effects, such as skin damage and circulatory problems. While your drinking water meets EPA's standard for arsenic, it does contain low levels of arsenic. EPA's standard balances the current understanding of arsenic's possible health effects against the costs of removing arsenic from drinking water. EPA continues to research the health effects of low levels of arsenic, which is a mineral known to cause cancer in humans at high concentrations and is linked to other health effects such as skin damage and circulatory problems.							

All contaminants listed below were tested for and were NOT found in our water. These contaminants are considered Non-Detect or not present:

Synthetic Organic Compounds (Last tested 2025): 2,4-D, 2,4,5-TP (a.k.a. Silvex), Acrylamide, Alachlor, Atrazine, Benzo (a) pyrene (PAH), Carbofuran, Chlordane, Dalapon, Di (2-ethylhexyl) adipate, Di (2-ethylhexyl) phthalate, Dibromochloropropane, Dinoseb, Diquat, Dioxin [a.k.a. 2,3,7,8-TCDD], Endothall, Endrin, Epichlorohydrin, Ethylene dibromide, Glyphosate, Heptachlor, Heptachlor epoxide, Hexachlorobenzene, Hexachlorocyclo pentadiene, Lindane, Methoxychlor, Oxamyl (a.k.a. Vydate), PCBs (Polychlorinated biphenyls), Pentachlorophenol, Picloram, Simazine, Toxaphene

Volatile Organic Compounds (Last tested 2025): Benzene, Carbon tetrachloride, Chlorobenzene, o-Dichlorobenzene, p-Dichlorobenzene, 1,2-Dichloroethane, 1,1-Dichloroethylene, cis-1,2 Dichloroethylene, trans-1,2-Dichloroethylene, Dichloromethane, 1,2-Dichloropropane, Ethylbenzene, Styrene, Tetrachloroethylene, 1,2,4-Trichlorobenzene, 1,1,1-Trichloroethane, 1,1,2-Trichloroethane, Trichloroethylene, Toluene, Vinyl Chloride, Xylenes

Inorganic Chemicals (Last tested 2025): Antimony, Asbestos, Beryllium, Cadmium, Cyanide, Mercury, Nitrite, Thallium

Water Quality Table – Unregulated Contaminants

Your drinking water was sampled in **2024** for the presence and concentration of 29 different per- and polyfluoroalkyl substances, some known by the acronyms PFAS, PFOA, PFNA, PFHxS, PFBS, and GenX, a group of contaminants in the final stages of becoming regulated by the EPA. PFAS are man-made chemicals that are resistant to heat, water, and oil. They have been used since the 1940s to manufacture various consumer products, including fire-fighting foam and stain resistant, water-resistant, and nonstick items. Many PFAS do not break down easily and can build up in people, animals, and the environment over time. Scientific studies have shown that exposure to certain PFAS can be harmful to people and animals, depending on the level and duration of exposure.

To learn more about this group of chemicals, we encourage you to visit the ADEQ website at <https://www.azdeq.gov/pfas-resources>. You may also read the ADEQ-provided “PFAS 101 Fact Sheet” or view ADEQ’s Introduction to PFAS video on YouTube at <https://www.youtube.com/watch?v=t44kSh0uKXE>

No PFAS contaminants were detected in your water.

For more information about these reports and what is required in them, visit EPA’s website at: <https://www.epa.gov/ccr/ccr-information-consumers>

Walnut Creek

2025 Consumer Confidence Report (CCR)

The following map outlines the boundaries in yellow for Walnut Creek Water Company.



Consumer Confidence Report for Calendar Year 2025

Este informe contiene información muy importante sobre el agua usted bebe.
Tradúscalo ó hable con alguien que lo entienda bien.

<https://espanol.epa.gov/espanol/recursos-e-informacion-sobre-el-ccr-para-los-consumidores>

Public Water System ID Number	Public Water System Name		
AZ04-08078	Walnut Creek Water Company		
Contact Name and Title	Phone Number	E-mail Address	
Jason Gagne, Compliance Manager	623-219-4740	jgagne@hopewater.com	
We want our valued customers to be informed about their water quality. If you would like to learn more, please visit our website at hopewater.com.			

This is our annual report about your drinking water quality, also called a Consumer Confidence Report or CCR. Having clean, safe water is one of the most important services we provide, and we want you to be as informed as possible about your drinking water.

This report provides you with information about where your water comes from, results of sampling that we have performed, and any issues or violations that happened over the previous year. This water quality report includes a table with the most recent water testing results within the last 5 years. The table shows if different germs and chemicals were in a safe range and met EPA's health standards. Look for the column in the table called "TT or MCL violation," to see if your utility found unsafe levels of any germs or chemicals.

You may also find real-time information about our water system at the Arizona Department of Environmental Quality (ADEQ) *Drinking Water Watch* website at https://azsdwis.azdeq.gov/DWW_EXT/

Drinking Water Sources

The sources of drinking water (both tap water and bottled water) include rivers, lakes, streams, ponds, reservoirs, springs, and wells. As water travels over the surface of the land or through the ground, it dissolves naturally-occurring minerals and, in some cases, radioactive material, and can pick up substances resulting from the presence of animals or from human activity.

Our water source(s):	Groundwater: 4 active wells that pump groundwater from the Sacramento Valley Basin. 55-208038, 55-506325, 55-580129, 55-581044
-----------------------------	--

Source Water Assessment

Making the water safe to drink starts by protecting the place it comes from. We work with state scientists at the Arizona Department of Environmental Quality (ADEQ) to examine water at its source to look for possible pollutants. This is called a Source Water Assessment (SWA).

This water system did not receive a SWA because the system was either inactive at the time or the system did not exist.

Drinking Water Contaminants

Contaminants are any physical, chemical, biological, or radiological substance or matter in water. Contaminants that may be present in source water include:

Microbial Contaminants: such as viruses and bacteria, which may come from sewage treatment plants, septic systems, agricultural livestock operations, and wildlife.

Inorganic Contaminants: such as salts and metals, which can occur naturally in the soil or groundwater or may result from urban stormwater runoff, industrial or domestic wastewater discharges, oil and gas production, mining, or farming.

Pesticides and herbicides: which may come from a variety of sources such as agriculture, urban stormwater runoff, and residential uses.

Organic Chemical Contaminants: including synthetic and volatile organic chemicals, which are by-products of industrial processes and petroleum production, and can also come from gas stations, urban stormwater runoff, and septic systems.

Radioactive Contaminants: which can be naturally-occurring or be the result of oil and gas production and mining activities.

Vulnerable Population

Drinking water, including bottled water, may reasonably be expected to contain at least small amounts of some contaminants. The presence of contaminants does not necessarily indicate that water poses a health risk. In order to ensure that tap water is safe to drink, the Environmental Protection Agency (EPA) prescribes regulations which limit the amount of certain contaminants in water provided by public water systems. The Food and Drug Administration (FDA) regulations establish limits for contaminants in bottled water which must provide the same protection for public health.

Some people may be more vulnerable to contaminants in drinking water than the general population. Immuno-compromised persons such as persons with cancer undergoing chemotherapy, persons who have undergone organ transplants, people with HIV/AIDS or other immune system disorders, some elderly, and infants can be particularly at risk from infections. These people should seek advice about drinking water from their health care providers.

More information about contaminants, their potential health effects, and the appropriate means to lessen the risk can be obtained by calling the Environmental Protection Agency's Safe Drinking Water Hotline at 800-426-4791 or visiting the website epa.gov/safewater.

Definitions

Maximum Contaminant Level (MCL): The highest level of a contaminant that is allowed in drinking water. MCLs are set as close to the MCLGs as feasible using the best available treatment technology.

Maximum Contaminant Level Goal (MCLG): The level of a contaminant in drinking water below which there is no known or expected risk to health. MCLGs allow for a margin of safety.

Treatment Technique (TT): A required process intended to reduce the level of a contaminant in drinking water.

Action Level (AL): The concentration of a contaminant which, if exceeded, triggers treatment or other requirements which a water system must follow.

Maximum residual disinfectant level goal or MRDLG: The level of a drinking water disinfectant below which there is no known or expected risk to health. MRDLGs do not reflect the benefits of the use of disinfectants to control microbial contaminants.

Maximum Residual Disinfectant Level (MRDL): The highest level of a disinfectant allowed in drinking water. There is convincing evidence that addition of a disinfectant is necessary for control of microbial contaminants.

Level 1 Assessment: A study of the water system to identify potential problems and determine (if possible) why total coliform bacteria have been found in our water system.

Level 2 Assessment: A very detailed study of the water system to identify potential problems and determine (if possible) why an *E. coli* MCL violation has occurred and/or why total coliform bacteria have been found in our water system on multiple occasions.

Lead Informational Statement

Lead can cause serious health problems, especially for pregnant women and young children. Lead in drinking water is primarily from materials and components associated with service lines and home plumbing.

Walnut Creek Water Company is responsible for providing high quality drinking water and removing lead pipes, but cannot control the variety of materials used in plumbing components in your home. You share the responsibility for protecting yourself and your family from the lead in your home plumbing. You can take responsibility by identifying and removing lead materials within your home plumbing and taking steps to reduce your family's risk.

Before drinking tap water, flush your pipes for several minutes by running your tap, taking a shower, doing laundry or a load of dishes. You can also use a filter certified by an American National Standards Institute accredited certifier to reduce lead in drinking water.

To address lead in drinking water, public water systems were required to develop and maintain an inventory of service line materials by Oct 16, 2024. Developing an inventory and identifying the location of lead service lines (LSL) is the first step for beginning LSL replacement and protecting public health. Please contact us at hopewater.com if you would like more information about the inventory or any lead sampling that has been done.

Information on lead in drinking water, testing methods, and steps you can take to minimize exposure is available at <http://www.epa.gov/safewater/lead>.

Water Quality Data – Regulated Contaminants

The following are terms related to water quality data presented in this table:

Not Applicable (NA): Sampling was not completed because it was not required by regulation.

Not Detected (ND or <): Not detectable at reporting limit.

Minimum Reporting Limit (MRL): The smallest concentration of a substance that can be reliably measured by a given analytical method.

Millirems per year (MREM): A measure of radiation absorbed by the body.

Nephelometric Turbidity Units (NTU): Measure of water clarity.

Million fibers per liter (MFL): Measure of asbestos fibers.

Picocuries per liter (pCi/L): Measure of the radioactivity in water.

ppm: Parts per million or Milligrams per liter (mg/L), equal to 1/1000 of a gram.

ppb: Parts per billion or Micrograms per liter (µg/L), equal to 1000 ppm.

ppt: Parts per trillion or Nanograms per liter (ng/L), equal to 1000 ppb.

ppq: Parts per quadrillion or Picograms per liter (pg/L), equal to 1000 ppt.

Microbiological (RTCR)	TT Violation Y or N	Number of Positive Samples	Positive Sample(s) Month & Year	MCL	MCLG	Likely Source of Contamination	
E. Coli	N	0	N/A	0	0	Human and animal fecal waste.	
Coliform Bacteria	N	1	May 2025	0	0	Naturally present in the environment	
Disinfectants	MCL Violation Y or N	Running Annual Average (RAA)	Range of All Samples (Low-High)	MRDL	MRDLG	Sample Month & Year	Likely Source of Contamination
Chlorine/Chloramine (ppm)	N	0.7	0.5 – 0.7	4	4	2025	Water additive used to control microbes
Disinfection By-Products	MCL Violation Y or N	Running Annual Average (RAA)	Range of All Samples (Low-High)	MCL	MCLG	Sample Month & Year	Likely Source of Contamination
Total Trihalomethanes (TTHM) (ppb)	N	2	1.5 – 2.4	80	N/A	Aug 2025	Byproduct of drinking water disinfection
Lead & Copper	MCL Violation Y or N	90 th Percentile	Number of Samples Exceeding AL	AL	ALG	Sample Month & Year	Likely Source of Contamination
Copper (ppm)	N	0.038	0	1.3	1.3	July 2025	Corrosion of household plumbing systems; erosion of natural deposits
Lead (ppb)	N	1.7	0	15	0	July 2025	Corrosion of household plumbing systems; erosion of natural deposits
Radionuclides	MCL Violation Y or N	Running Annual Average (RAA)	Range of All Samples (Low-High)	MCL	MCLG	Sample Month & Year	Likely Source of Contamination
Alpha Emitters (pCi/L)	N	4.27	4.27 – 4.27	15	0	2025	Erosion of natural deposits
Combined Radium-226 & -228 (pCi/L)	N	0.93	0.93 – 0.93	5	0	2025	Erosion of natural deposits
Inorganic Chemicals (IOC)	MCL Violation Y or N	Running Annual Average (RAA)	Range of All Samples (Low-High)	MCL	MCLG	Sample Month & Year	Likely Source of Contamination
Arsenic ¹ (ppb)	N	9	9 - 9	10	0	Apr 2025	Erosion of natural deposits, runoff from orchards, runoff from glass and electronics production wastes
Barium (ppm)	N	0.052	0.052 – 0.052	2	2	Apr 2025	Discharge of drilling wastes; discharge from metal refineries; Erosion of natural deposits
Chromium (ppb)	N	6.7	6.7 – 6.7	100	100	Apr 2025	Discharge from steel and pulp mills; Erosion of natural deposits
Fluoride (ppm)	N	1.9	1.9 – 1.9	4	4	Apr 2025	Erosion of natural deposits; water additive which promotes strong teeth; discharge from fertilizer and aluminum factories
Nitrate ² (ppm)	N	4	3.6 – 3.6	10	10	Apr 2025	Runoff from fertilizer use; leaching from septic tanks, sewage; erosion of natural deposits
Selenium (ppb)	N	6	6.6 – 6.6	50	50	Apr 2025	Discharge from petroleum and metal refineries; erosion of natural deposits; discharge from mines

Sodium (ppm)	N	56	56 - 56	N/A	N/A	Apr 2025	Erosion of natural deposits
<p>¹ Arsenic is a mineral known to cause cancer in humans at high concentration and is linked to other health effects, such as skin damage and circulatory problems. While your drinking water meets EPA's standard for arsenic, it does contain low levels of arsenic. EPA's standard balances the current understanding of arsenic's possible health effects against the costs of removing arsenic from drinking water. EPA continues to research the health effects of low levels of arsenic, which is a mineral known to cause cancer in humans at high concentrations and is linked to other health effects such as skin damage and circulatory problems.</p>							

All contaminants listed below were tested for and were NOT found in our water. These contaminants are considered Non-Detect or not present:

Synthetic Organic Compounds (Last tested 4/17/2024): 2,4-D, 2,4,5-TP (a.k.a. Silvex), Acrylamide, Alachlor, Atrazine, Benzo (a) pyrene (PAH), Carbofuran, Chlordane, Dalapon, Di (2-ethylhexyl) adipate, Di (2-ethylhexyl) phthalate, Dibromochloropropane, Dinoseb, Diquat, Dioxin [a.k.a. 2,3,7,8-TCDD], Endothall, Endrin, Epichlorohydrin, Ethylene dibromide, Glyphosate, Heptachlor, Heptachlor epoxide, Hexachlorobenzene, Hexachlorocyclo pentadiene, Lindane, Methoxychlor, Oxamyl (a.k.a. Vydate), PCBs (Polychlorinated biphenyls), Pentachlorophenol, Picloram, Simazine, Toxaphene

Volatile Organic Compounds (Last tested 4/15/2025): Benzene, Carbon tetrachloride, Chlorobenzene, o-Dichlorobenzene, p-Dichlorobenzene, 1,2-Dichloroethane, 1,1-Dichloroethylene, cis-1,2 Dichloroethylene, trans-1,2-Dichloroethylene, Dichloromethane, 1,2-Dichloropropane, Ethylbenzene, Styrene, Tetrachloroethylene, 1,2,4-Trichlorobenzene, 1,1,1-Trichloroethane, 1,1,2-Trichloroethane, Trichloroethylene, Toluene, Vinyl Chloride, Xylenes

Inorganic Chemicals (Last tested 2025): Antimony, Asbestos, Beryllium, Cadmium, Cyanide, Fluoride, Mercury, Nitrite, Thallium

Water Quality Table – Unregulated Contaminants

Your drinking water was sampled in **2024** for the presence and concentration of 29 different per- and polyfluoroalkyl substances, some known by the acronyms PFAS, PFOA, PFNA, PFHxS, PFBS, and GenX, a group of contaminants in the final stages of becoming regulated by the EPA. PFAS are man-made chemicals that are resistant to heat, water, and oil. They have been used since the 1940s to manufacture various consumer products, including fire-fighting foam and stain resistant, water-resistant, and nonstick items. Many PFAS do not break down easily and can build up in people, animals, and the environment over time. Scientific studies have shown that exposure to certain PFAS can be harmful to people and animals, depending on the level and duration of exposure.

To learn more about this group of chemicals, we encourage you to visit the ADEQ website at <https://www.azdeq.gov/pfas-resources>. You may also read the ADEQ-provided "PFAS 101 Fact Sheet" or view ADEQ's Introduction to PFAS video on YouTube at <https://www.youtube.com/watch?v=t44kSh0uKXE>

No PFAS contaminants were detected in your water.

For more information about these reports and what is required in them, visit EPA's website at: <https://www.epa.gov/ccr/ccr-information-consumers>

Yavapai

2025 Consumer Confidence Report (CCR)

The following map outlines the boundaries in yellow for Yavapai Water Company.



Consumer Confidence Report for Calendar Year 2025

Este informe contiene información muy importante sobre el agua usted bebe.
Tradúscalo ó hable con alguien que lo entienda bien.

<https://espanol.epa.gov/espanol/recursos-e-informacion-sobre-el-ccb-para-los-consumidores>

Public Water System ID Number	Public Water System Name		
AZ04-13010	Yavapai Water Company		
Contact Name and Title	Phone Number	E-mail Address	
Jason Gagne, Compliance Manager	623-219-4740	jgagne@hopewater.com	
We want our valued customers to be informed about their water quality. If you would like to learn more, please visit our website at hopewater.com.			

This is our annual report about your drinking water quality, also called a Consumer Confidence Report or CCR. Having clean, safe water is one of the most important services we provide, and we want you to be as informed as possible about your drinking water.

This report provides you with information about where your water comes from, results of sampling that we have performed, and any issues or violations that happened over the previous year. This water quality report includes a table with the most recent water testing results within the last 5 years. The table shows if different germs and chemicals were in a safe range and met EPA's health standards. Look for the column in the table called "TT or MCL violation," to see if your utility found unsafe levels of any germs or chemicals.

You may also find real-time information about our water system at the Arizona Department of Environmental Quality (ADEQ) *Drinking Water Watch* website at https://azsdwis.azdeq.gov/DWW_EXT/

Drinking Water Sources

The sources of drinking water (both tap water and bottled water) include rivers, lakes, streams, ponds, reservoirs, springs, and wells. As water travels over the surface of the land or through the ground, it dissolves naturally-occurring minerals and, in some cases, radioactive material, and can pick up substances resulting from the presence of animals or from human activity.

Our water source(s):	Groundwater from two wells below the dam at Canyon Mouth.
-----------------------------	---

Source Water Assessment

Making the water safe to drink starts by protecting the place it comes from. We work with state scientists at the Arizona Department of Environmental Quality (ADEQ) to examine water at its source to look for possible pollutants. This is called a Source Water Assessment (SWA).

Based on the information available at the time of the assessment on the hydrogeology and land uses around the drinking water source(s) of this public water system, the Arizona Department of Environmental Quality (ADEQ) has given a low vulnerability designation for the degree to which this public water system drinking water source(s) are protected.

A low vulnerability designation indicates that most source water protection measures are either already implemented, or the hydrogeology is such that the source water protection measures will have little impact on protection. Further source water assessment information can be found on ADEQ's website: <https://azdeq.gov/source-water-protection>

Drinking Water Contaminants

Contaminants are any physical, chemical, biological, or radiological substance or matter in water. Contaminants that may be present in source water include:

Microbial Contaminants: such as viruses and bacteria, which may come from sewage treatment plants, septic systems, agricultural livestock operations, and wildlife.

Inorganic Contaminants: such as salts and metals, which can occur naturally in the soil or groundwater or may result from urban stormwater runoff, industrial or domestic wastewater discharges, oil and gas production, mining, or farming.

Pesticides and herbicides: which may come from a variety of sources such as agriculture, urban stormwater runoff, and residential uses.

Organic Chemical Contaminants: including synthetic and volatile organic chemicals, which are by-products of industrial processes and petroleum production, and can also come from gas stations, urban stormwater runoff, and septic systems.

Radioactive Contaminants: which can be naturally-occurring or be the result of oil and gas production and mining activities.

Vulnerable Population

Drinking water, including bottled water, may reasonably be expected to contain at least small amounts of some contaminants. The presence of contaminants does not necessarily indicate that water poses a health risk. In order to ensure that tap water is safe to drink, the Environmental Protection Agency (EPA) prescribes regulations which limit the amount of certain contaminants in water provided by public water systems. The Food and Drug Administration (FDA) regulations establish limits for contaminants in bottled water which must provide the same protection for public health.

Some people may be more vulnerable to contaminants in drinking water than the general population. Immuno-compromised persons such as persons with cancer undergoing chemotherapy, persons who have undergone organ transplants, people with HIV/AIDS or other immune system disorders, some elderly, and infants can be particularly at risk from infections. These people should seek advice about drinking water from their health care providers.

More information about contaminants, their potential health effects, and the appropriate means to lessen the risk can be obtained by calling the Environmental Protection Agency's Safe Drinking Water Hotline at 800-426-4791 or visiting the website epa.gov/safewater.

Definitions

Maximum Contaminant Level (MCL): The highest level of a contaminant that is allowed in drinking water. MCLs are set as close to the MCLGs as feasible using the best available treatment technology.

Maximum Contaminant Level Goal (MCLG): The level of a contaminant in drinking water below which there is no known or expected risk to health. MCLGs allow for a margin of safety.

Treatment Technique (TT): A required process intended to reduce the level of a contaminant in drinking water.

Action Level (AL): The concentration of a contaminant which, if exceeded, triggers treatment or other requirements which a water system must follow.

Maximum residual disinfectant level goal or MRDLG: The level of a drinking water disinfectant below which there is no known or expected risk to health. MRDLGs do not reflect the benefits of the use of disinfectants to control microbial contaminants.

Maximum Residual Disinfectant Level (MRDL): The highest level of a disinfectant allowed in drinking water. There is convincing evidence that addition of a disinfectant is necessary for control of microbial contaminants.

Level 1 Assessment: A study of the water system to identify potential problems and determine (if possible) why total coliform bacteria have been found in our water system.

Level 2 Assessment: A very detailed study of the water system to identify potential problems and determine (if possible) why an *E. coli* MCL violation has occurred and/or why total coliform bacteria have been found in our water system on multiple occasions.

Lead Informational Statement

Lead can cause serious health problems, especially for pregnant women and young children. Lead in drinking water is primarily from materials and components associated with service lines and home plumbing.

Yavapai Water Company is responsible for providing high quality drinking water and removing lead pipes, but cannot control the variety of materials used in plumbing components in your home. You share the responsibility for protecting yourself and your family from the lead in your home plumbing. You can take responsibility by identifying and removing lead materials within your home plumbing and taking steps to reduce your family's risk.

Before drinking tap water, flush your pipes for several minutes by running your tap, taking a shower, doing laundry or a load of dishes. You can also use a filter certified by an American National Standards Institute accredited certifier to reduce lead in drinking water.

To address lead in drinking water, public water systems were required to develop and maintain an inventory of service line materials by Oct 16, 2024. Developing an inventory and identifying the location of lead service lines (LSL) is the first step for beginning LSL replacement and protecting public health. Please contact us at hopewater.com if you would like more information about the inventory or any lead sampling that has been done.

Information on lead in drinking water, testing methods, and steps you can take to minimize exposure is available at <http://www.epa.gov/safewater/lead>.

Water Quality Data – Regulated Contaminants

The following are terms related to water quality data presented in this table:

Not Applicable (NA): Sampling was not completed because it was not required by regulation.

Not Detected (ND or <): Not detectable at reporting limit.

Minimum Reporting Limit (MRL): The smallest concentration of a substance that can be reliably measured by a given analytical method.

Millirems per year (MREM): A measure of radiation absorbed by the body.

Nephelometric Turbidity Units (NTU): Measure of water clarity.

Million fibers per liter (MFL): Measure of asbestos fibers.

Picocuries per liter (pCi/L): Measure of the radioactivity in water.

ppm: Parts per million or Milligrams per liter (mg/L), equal to 1/1000 of a gram.

ppb: Parts per billion or Micrograms per liter (µg/L), equal to 1000 ppm.

ppt: Parts per trillion or Nanograms per liter (ng/L), equal to 1000 ppb.

ppq: Parts per quadrillion or Picograms per liter (pg/L), equal to 1000 ppt.

Microbiological (RTCR)	TT Violation Y or N	Number of Positive Samples	Positive Sample(s) Month & Year	MCL	MCLG	Likely Source of Contamination	
E. Coli	N	0	N/A	0	0	Human and animal fecal waste	
Disinfectants	MCL Violation Y or N	Running Annual Average (RAA)	Range of All Samples (Low-High)	MRDL	MRDLG	Sample Month & Year	Likely Source of Contamination
Chlorine/Chloramine (ppm)	N	1	0.35 – 1.43	4	4	2025	Water additive used to control microbes
Disinfection By-Products	MCL Violation Y or N	Running Annual Average (RAA) OR Highest Level Detected	Range of All Samples (Low-High)	MCL	MCLG	Sample Month & Year	Likely Source of Contamination
Total Trihalomethanes (TTHM) (ppb)	N	3	2.3 - 4	80	N/A	July 2025	Byproduct of drinking water disinfection
Lead & Copper	MCL Violation Y or N	90 th Percentile	Number of Samples Exceeding AL	AL	ALG	Sample Month & Year	Likely Source of Contamination
Copper (ppm)	N	0.099	0	1.3	1.3	July 2025	Corrosion of household plumbing systems; erosion of natural deposits
Radionuclides	MCL Violation Y or N	Running Annual Average (RAA) OR Highest Level Detected	Range of All Samples (Low-High)	MCL	MCLG	Sample Month & Year	Likely Source of Contamination
Alpha Emitters (pCi/L)	N	8.56	8.56 – 8.56	15	0	2025	Erosion of natural deposits
Combined Radium-226 & -228 (pCi/L)	N	0.889	0.889 – 0.889	5	0	2025	Erosion of natural deposits
Inorganic Chemicals (IOC)	MCL Violation Y or N	Running Annual Average (RAA) OR Highest Level Detected	Range of All Samples (Low-High)	MCL	MCLG	Sample Month & Year	Likely Source of Contamination
Arsenic ¹ (ppb)	N	2.6	2.6 – 2.6	10	0	Aug 2022	Erosion of natural deposits, runoff from orchards, runoff from glass and electronics production wastes
Barium (ppm)	N	0.098	0.098 – 0.098	2	2	Aug 2022	Discharge of drilling wastes; discharge from metal refineries; Erosion of natural deposits
Fluoride (ppm)	N	0.14	0.14 – 0.14	4	4	Aug 2022	Erosion of natural deposits; water additive which promotes strong teeth; discharge from fertilizer and aluminum factories
Nitrate ² (ppm)	N	2	2 - 2	10	10	July 2025	Runoff from fertilizer use; leaching from septic tanks, sewage; erosion of natural deposits
Sodium (ppm)	N	11	11 - 11	N/A	N/A	Nov 2024	Erosion of natural deposits

All contaminants listed below were tested for and were NOT found in our water. These contaminants are considered Non-Detect or not present:

Synthetic Organic Compounds (Last tested 2025): 2,4-D, 2,4,5-TP (a.k.a. Silvex), Acrylamide, Alachlor, Atrazine, Benzo (a) pyrene (PAH), Carbofuran, Chlordane, Dalapon, Di (2-ethylhexyl) adipate, Di (2-ethylhexyl) phthalate, Dibromochloropropane, Dinoseb, Diquat, Dioxin [a.k.a. 2,3,7,8-TCDD], Endothall, Endrin, Epichlorohydrin, Ethylene dibromide, Glyphosate, Heptachlor, Heptachlor epoxide, Hexachlorobenzene, Hexachlorocyclo pentadiene, Lindane, Methoxychlor, Oxamyl (a.k.a. Vydate), PCBs (Polychlorinated biphenyls), Pentachlorophenol, Picloram, Simazine, Toxaphene

Volatile Organic Compounds (Last tested 2025): Benzene, Carbon tetrachloride, Chlorobenzene, o-Dichlorobenzene, p-Dichlorobenzene, 1,2-Dichloroethane, 1,1-Dichloroethylene, cis-1,2 Dichloroethylene, trans-1,2-Dichloroethylene, Dichloromethane, 1,2-Dichloropropane, Ethylbenzene, Styrene, Tetrachloroethylene, 1,2,4-Trichlorobenzene, 1,1,1-Trichloroethane, 1,1,2-Trichloroethane, Trichloroethylene, Toluene, Vinyl Chloride, Xylenes

Inorganic Chemicals (Last tested 2022): Antimony, Asbestos, Beryllium, Cadmium, Chromium, Cyanide, Mercury, Nitrite, Selenium, Thallium

Water Quality Table – Unregulated Contaminants

Your drinking water was sampled in **2024** for the presence and concentration of 29 different per- and polyfluoroalkyl substances, some known by the acronyms PFAS, PFOA, PFNA, PFHxS, PFBS, and GenX, a group of contaminants in the final stages of becoming regulated by the EPA. PFAS are man-made chemicals that are resistant to heat, water, and oil. They have been used since the 1940s to manufacture various consumer products, including fire-fighting foam and stain resistant, water-resistant, and nonstick items. Many PFAS do not break down easily and can build up in people, animals, and the environment over time. Scientific studies have shown that exposure to certain PFAS can be harmful to people and animals, depending on the level and duration of exposure.

To learn more about this group of chemicals, we encourage you to visit the ADEQ website at <https://www.azdeq.gov/pfas-resources>. You may also read the ADEQ-provided “PFAS 101 Fact Sheet” or view ADEQ’s Introduction to PFAS video on YouTube at <https://www.youtube.com/watch?v=t44kSh0uKXE>

No PFAS contaminants were detected in your water.

For more information about these reports and what is required in them, visit EPA’s website at: <https://www.epa.gov/ccr/ccr-information-consumers>